

## RPL22 Antibody

Catalog No: #47906

Orders: [order@signalwayantibody.com](mailto:order@signalwayantibody.com)Support: [tech@signalwayantibody.com](mailto:tech@signalwayantibody.com)

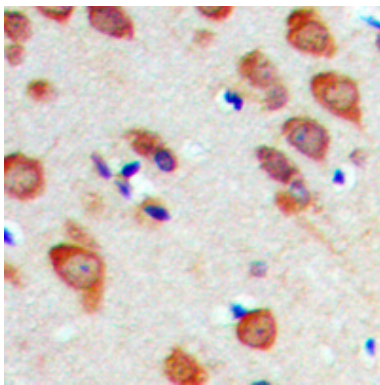
## Description

Product Name	RPL22 Antibody
Host Species	Rabbit
Clonality	Polyclonal
Purification	The antibody was purified by immunogen affinity chromatography.
Applications	WB, IHC
Species Reactivity	Hu,Ms,Rt
Specificity	Recognizes endogenous levels of RPL22 protein.
Immunogen Description	KLH-conjugated synthetic peptide encompassing a sequence within the center region of human RPL22.
Target Name	RPL22
Other Names	60S ribosomal protein L22; EBER-associated protein; EAP; Epstein-Barr virus small RNA-associated protein; Heparin-binding protein HBp15
Accession No.	Swiss-Prot#:P35268NCBI Gene ID:6146
Uniprot	P35268
GeneID	6146;
Calculated MW	14KD
Concentration	1 mg/ml
Formulation	Liquid in 0.42% Potassium phosphate, 0.87% Sodium chloride, pH 7.3, 30% glycerol, and 0.01% sodium azide.
Storage	Store at -20°C

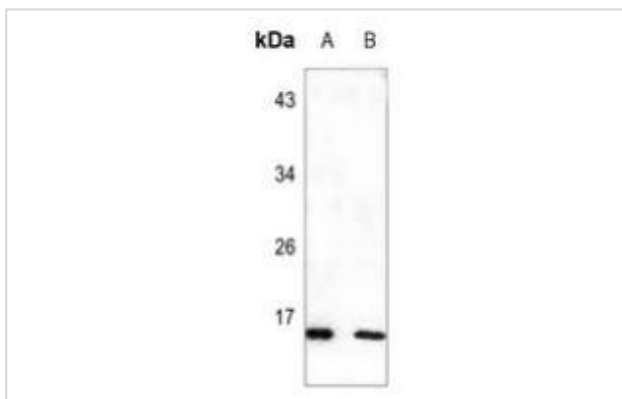
## Application Details

WB (1/500 - 1/1000), IHC (1/100 - 1/200)

## Images



Immunohistochemical analysis of RPL22 staining in human brain formalin fixed paraffin embedded tissue section. The section was then incubated with the antibody at room temperature and detected using an HRP conjugated compact polymer system. DAB was used as the chromogen. The section was then counterstained with haematoxylin and mounted with DPX.



Western blot analysis of RPL22 expression in SP20 (A), C6 (B) whole cell lysates.

---

Note: This product is for in vitro research use only