

RHOBTB3 Polyclonal Antibody

Catalog No: #41398

Package Size: #41398-1 50ul #41398-2 100ul

Orders: order@signalwayantibody.comSupport: tech@signalwayantibody.com

Description

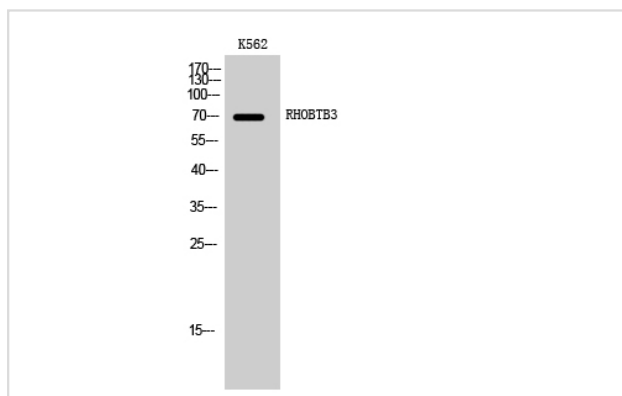
Product Name	RHOBTB3 Polyclonal Antibody
Host Species	Rabbit
Clonality	Polyclonal
Purification	The antibody was affinity-purified from rabbit antiserum by affinity-chromatography using epitope-specific immunogen.
Applications	WB IHC
Species Reactivity	Hu Ms
Specificity	RHOBTB3 Polyclonal Antibody detects endogenous levels of RHOBTB3 protein.
Immunogen Type	peptide
Immunogen Description	Synthesized peptide derived from the Internal region of human RHOBTB3.
Target Name	RHOBTB3
Other Names	RHOBTB3; KIAA0878; Rho-related BTB domain-containing protein 3
Accession No.	Swiss-Prot: O94955NCBI Gene ID: 22836
Uniprot	O94955
GeneID	22836;
SDS-PAGE MW	70kd
Concentration	1mg/ml
Formulation	Liquid in PBS containing 50% glycerol, 0.5% BSA and 0.02% sodium azide.
Storage	Store at -20°C/1 year

Application Details

Western Blot: 1/500 - 1/2000.

Immunohistochemistry: 1/100 - 1/300. Immunocytochemistry: 1/200 - 1/1000.

Images



Western Blot analysis of K562 cells using RHOBTB3 Polyclonal Antibody

Note: This product is for in vitro research use only