

MARCH5 Antibody

Catalog No: #47913



Orders: order@signalwayantibody.com
Support: tech@signalwayantibody.com

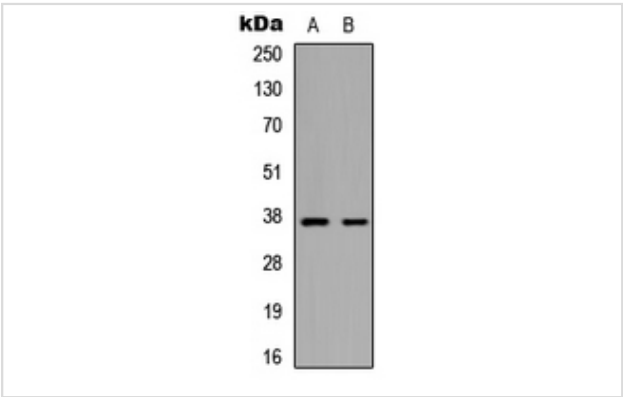
Description

Product Name	MARCH5 Antibody
Host Species	Rabbit
Clonality	Polyclonal
Purification	The antibody was purified by immunogen affinity chromatography.
Applications	WB, IF/ICC
Species Reactivity	Hu,Ms,Rt
Specificity	Recognizes endogenous levels of MARCH5 protein.
Immunogen Description	KLH-conjugated synthetic peptide encompassing a sequence within the center region of human MARCH5.
Target Name	5-Mar
Other Names	RNF153; E3 ubiquitin-protein ligase MARCH5; Membrane-associated RING finger protein 5; Membrane-associated RING-CH protein V; MARCH-V; Mitochondrial ubiquitin ligase; MITOL; RING finger protein 153
Accession No.	Swiss-Prot#:Q9NX47NCBI Gene ID:54708
Uniprot	Q9NX47
GeneID	54708;
Calculated MW	31KD
Concentration	1 mg/ml
Formulation	Liquid in 0.42% Potassium phosphate, 0.87% Sodium chloride, pH 7.3, 30% glycerol, and 0.01% sodium azide.
Storage	Store at -20°C

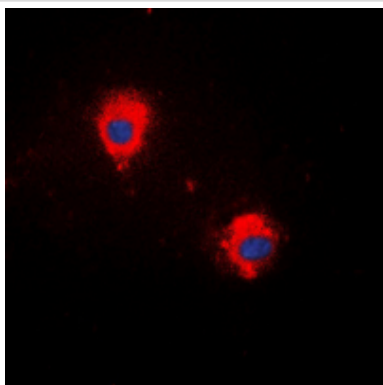
Application Details

WB (1/500 - 1/1000), IF/ICC (1/100 - 1/500)

Images



Western blot analysis of MARCH5 expression in HepG2 (A), mouse brain (B) whole cell lysates



Immunofluorescent analysis of MARCH5 staining in HepG2 cells. Formalin-fixed cells were permeabilized with 0.1% Triton X-100 in TBS for 5-10 minutes and blocked with 3% BSA-PBS for 30 minutes at room temperature. Cells were probed with the primary antibody in 3% BSA-PBS and incubated overnight at 4 C in a humidified chamber. Cells were washed with PBST and incubated with a DyLight 594-conjugated secondary antibody (red) in PBS at room temperature in the dark. DAPI was used to stain the cell nuclei (blue).

Note: This product is for in vitro research use only