

MRPL51 Antibody

Catalog No: #47921

Orders: order@signalwayantibody.comSupport: tech@signalwayantibody.com

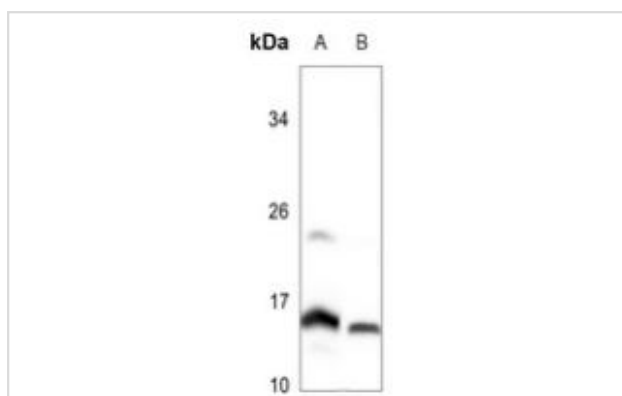
Description

Product Name	MRPL51 Antibody
Host Species	Rabbit
Clonality	Polyclonal
Purification	The antibody was purified by immunogen affinity chromatography.
Applications	WB, IHC, IF/ICC
Species Reactivity	Hu,Ms,Rt
Specificity	Recognizes endogenous levels of MRPL51 protein.
Immunogen Description	KLH-conjugated synthetic peptide encompassing a sequence within the center region of human MRPL51.
Target Name	MRPL51
Other Names	MRP64; 39S ribosomal protein L51, mitochondrial; L51mt; MRP-L51; bMRP-64; bMRP64
Accession No.	Swiss-Prot#:Q4U2R6NCBI Gene ID:51258
Uniprot	Q4U2R6
GeneID	51258;
Calculated MW	20KD
Concentration	1 mg/ml
Formulation	Liquid in 0.42% Potassium phosphate, 0.87% Sodium chloride, pH 7.3, 30% glycerol, and 0.01% sodium azide.
Storage	Store at -20°C

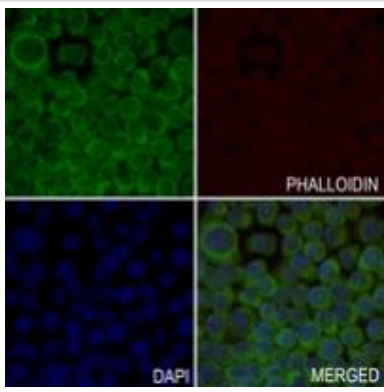
Application Details

WB (1/500 - 1/1000), IHC (1/50 - 1/100), IF/ICC (1/50 - 1/200)

Images



Western blot analysis of MRPL51 expression in Jurkat (A), rat testis (B) whole cell lysates



Immunofluorescent analysis of MRPL51 staining in LO2 cells. Formalin-fixed cells were permeabilized with 0.1% Triton X-100 in TBS for 5-10 minutes and blocked with 3% BSA-PBS for 30 minutes at room temperature. Cells were probed with the primary antibody in 3% BSA-PBS and incubated overnight at 4 °C in a humidified chamber. Cells were washed with PBST and incubated with a AF488-conjugated secondary antibody (green) in PBS at room temperature in the dark. Phalloidin - AF594 was used to stain Actin filaments (red). DAPI was used to stain the cell nuclei (blue).

Note: This product is for in vitro research use only