

MTA1 Antibody

Catalog No: #47922

Orders: order@signalwayantibody.comSupport: tech@signalwayantibody.com

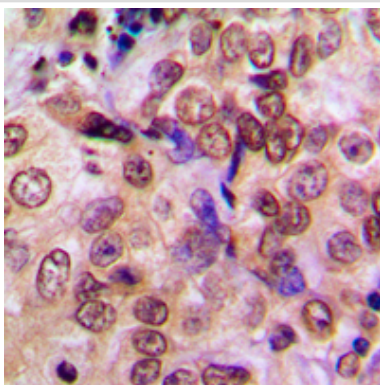
Description

Product Name	MTA1 Antibody
Host Species	Rabbit
Clonality	Polyclonal
Purification	The antibody was purified by immunogen affinity chromatography.
Applications	WB, IHC, IF/ICC
Species Reactivity	Hu,Ms,Rt
Specificity	Recognizes endogenous levels of MTA1 protein.
Immunogen Description	KLH-conjugated synthetic peptide encompassing a sequence within the center region of human MTA1.
Target Name	MTA1
Other Names	Metastasis-associated protein MTA1
Accession No.	Swiss-Prot#:Q13330NCBI Gene ID:9112
Uniprot	Q13330
GeneID	9112;
Calculated MW	80KD
Concentration	1 mg/ml
Formulation	Liquid in 0.42% Potassium phosphate, 0.87% Sodium chloride, pH 7.3, 30% glycerol, and 0.01% sodium azide.
Storage	Store at -20°C

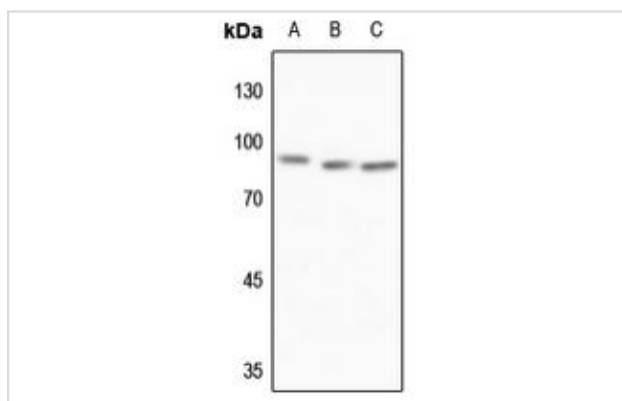
Application Details

WB (1/500 - 1/1000), IHC (1/50 - 1/100), IF/ICC (1/50 - 1/200)

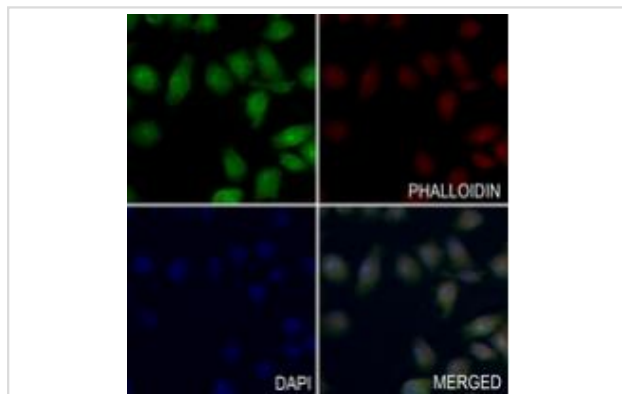
Images



Immunohistochemical analysis of MTA1 staining in human breast cancer formalin fixed paraffin embedded tissue section. The section was then incubated with the antibody at room temperature and detected using an HRP conjugated compact polymer system. DAB was used as the chromogen. The section was then counterstained with haematoxylin and mounted with DPX.



Western blot analysis of MTA1 expression in HEK293T (A), HeLa (B), HGC27 (C) whole cell lysates



Immunofluorescent analysis of MTA1 staining in LO2 cells. Formalin-fixed cells were permeabilized with 0.1% Triton X-100 in TBS for 5-10 minutes and blocked with 3% BSA-PBS for 30 minutes at room temperature. Cells were probed with the primary antibody in 3% BSA-PBS and incubated overnight at 4 °C in a humidified chamber. Cells were washed with PBST and incubated with a AF488-conjugated secondary antibody (green) in PBS at room temperature in the dark. Phalloidin - AF594 was used to stain Actin filaments (red). DAPI was used to stain the cell nuclei (blue)

Note: This product is for in vitro research use only