

Rhodopsin Antibody

Catalog No: #47929

Orders: order@signalwayantibody.comSupport: tech@signalwayantibody.com

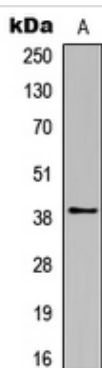
Description

Product Name	Rhodopsin Antibody
Host Species	Rabbit
Clonality	Polyclonal
Purification	The antibody was purified by immunogen affinity chromatography.
Applications	WB, IHC
Species Reactivity	Hu, Ms
Specificity	Recognizes endogenous levels of Rhodopsin protein.
Immunogen Description	KLH-conjugated synthetic peptide encompassing a sequence within the C-term region of human Rhodopsin.
Target Name	RHO
Other Names	OPN2; Rhodopsin; Opsin-2
Accession No.	Swiss-Prot#:P08100NCBI Gene ID:6010
Uniprot	P08100
GeneID	6010;
Calculated MW	39KD
Concentration	1 mg/ml
Formulation	Liquid in 0.42% Potassium phosphate, 0.87% Sodium chloride, pH 7.3, 30% glycerol, and 0.01% sodium azide.
Storage	Store at -20°C

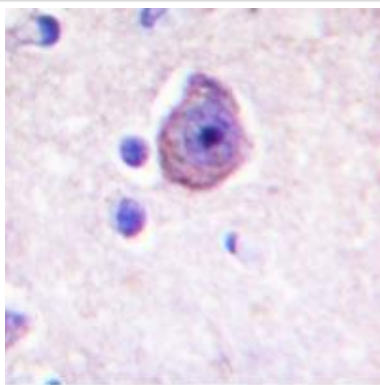
Application Details

WB (1/500 - 1/1000), IHC (1/50 - 1/100)

Images



Western blot analysis of Rhodopsin expression in HL60 (A) whole cell lysates



Immunohistochemical analysis of Rhodopsin staining in human brain formalin fixed paraffin embedded tissue section. The section was pre-treated using heat mediated antigen retrieval with sodium citrate buffer (pH 6.0). The section was then incubated with the antibody at room temperature and detected using an HRP conjugated compact polymer system. DAB was used as the chromogen. The section was then counterstained with haematoxylin and mounted with DPX.

Note: This product is for in vitro research use only