

## SNAT2 Antibody

Catalog No: #47931

Orders: order@signalwayantibody.com

Support: tech@signalwayantibody.com

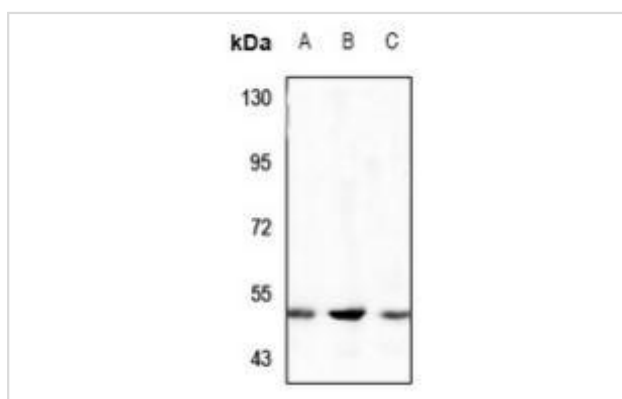
## Description

Product Name	SNAT2 Antibody
Host Species	Rabbit
Clonality	Polyclonal
Purification	The antibody was purified by immunogen affinity chromatography.
Applications	WB
Species Reactivity	Hu,Ms
Specificity	Recognizes endogenous levels of SNAT2 protein.
Immunogen Description	KLH-conjugated synthetic peptide encompassing a sequence within the center region of human SNAT2.
Target Name	SLC38A2
Other Names	ATA2; KIAA1382; SAT2; SNAT2; Sodium-coupled neutral amino acid transporter 2; Amino acid transporter A2; Protein 40-9-1; Solute carrier family 38 member 2; System A amino acid transporter 2; System A transporter 1; System N amino acid transporter 2
Accession No.	Swiss-Prot#:Q96QD8NCBI Gene ID:54407
Uniprot	Q96QD8
GeneID	54407;
Calculated MW	50KD
Concentration	1 mg/ml
Formulation	Liquid in 0.42% Potassium phosphate, 0.87% Sodium chloride, pH 7.3, 30% glycerol, and 0.01% sodium azide.
Storage	Store at -20°C

## Application Details

WB (1/500 - 1/1000)

## Images



Western blot analysis of SNAT2 expression in AML12 (A), HepG2 (B), U87MG (C) whole cell lysates.

---

Note: This product is for in vitro research use only