

## Ribosomal Protein L12 Polyclonal Antibody

Catalog No: #41400

Package Size: #41400-1 50ul #41400-2 100ul

Orders: [order@signalwayantibody.com](mailto:order@signalwayantibody.com)Support: [tech@signalwayantibody.com](mailto:tech@signalwayantibody.com)

## Description

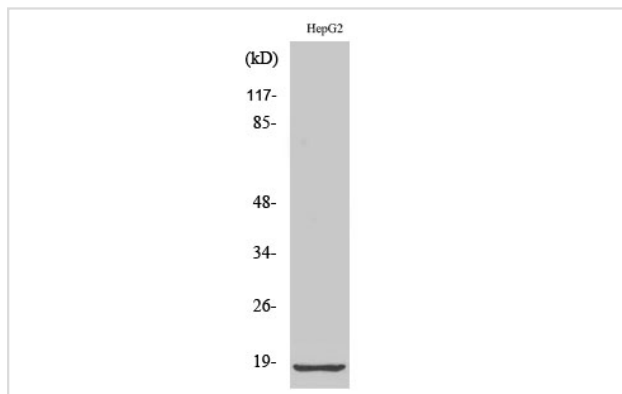
|                       |   |
|-----------------------|---|
| Product Name          | Ribosomal Protein L12 Polyclonal Antibody   |
| Host Species          | Rabbit  |
| Clonality             | Polyclonal  |
| Purification          | The antibody was affinity-purified from rabbit antiserum by affinity-chromatography using epitope-specific immunogen. |
| Applications          | WB IHC  |
| Species Reactivity    | Hu Ms Rt  |
| Specificity           | Ribosomal Protein L12 Polyclonal Antibody detects endogenous levels of Ribosomal Protein L12 protein.                 |
| Immunogen Type        | peptide   |
| Immunogen Description | Synthesized peptide derived from the Internal region of human Ribosomal Protein L12.                                  |
| Target Name           | Ribosomal Protein L12   |
| Other Names           | RPL12; 60S ribosomal protein L12  |
| Accession No.         | Swiss-Prot: P30050NCBI Gene ID: 6136  |
| Uniprot               | P30050  |
| GeneID                | 6136;   |
| SDS-PAGE MW           | 18kd  |
| Concentration         | 1mg/ml  |
| Formulation           | Liquid in PBS containing 50% glycerol, 0.5% BSA and 0.02% sodium azide.   |
| Storage               | Store at -20°C/1 year   |

## Application Details

Western Blot: 1/500 - 1/2000.

Immunohistochemistry: 1/100 - 1/300.

## Images



Western Blot analysis of HeLa cells using Ribosomal Protein L12 Polyclonal Antibody

---

Note: This product is for in vitro research use only