

CD296 Antibody

Catalog No: #47936

Orders: order@signalwayantibody.comSupport: tech@signalwayantibody.com

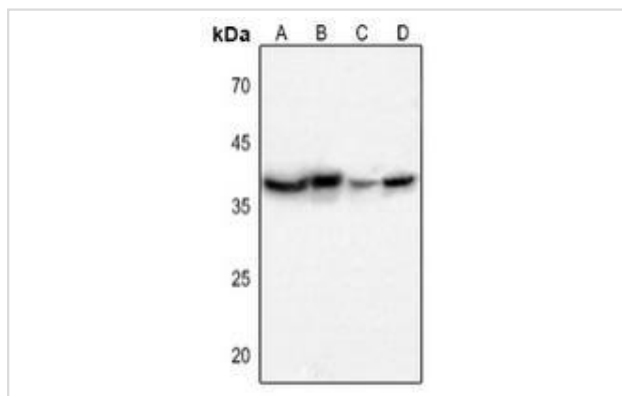
Description

Product Name	CD296 Antibody
Host Species	Rabbit
Clonality	Polyclonal
Purification	The antibody was purified by immunogen affinity chromatography.
Applications	WB, IHC
Species Reactivity	Hu,Ms,Rt
Specificity	Recognizes endogenous levels of CD296 protein.
Immunogen Description	KLH-conjugated synthetic peptide encompassing a sequence within the center region of human CD296.
Target Name	ART1
Other Names	GPI-linked NAD(P)(+)-arginine ADP-ribosyltransferase 1; ADP-ribosyltransferase C2 and C3 toxin-like 1; ARTC1; Mono(ADP-ribosyl)transferase 1; CD296
Accession No.	Swiss-Prot#:P52961NCBI Gene ID:417
Uniprot	P52961
GeneID	417;
Calculated MW	36KD
Concentration	1 mg/ml
Formulation	Liquid in 0.42% Potassium phosphate, 0.87% Sodium chloride, pH 7.3, 30% glycerol, and 0.01% sodium azide.
Storage	Store at -20°C

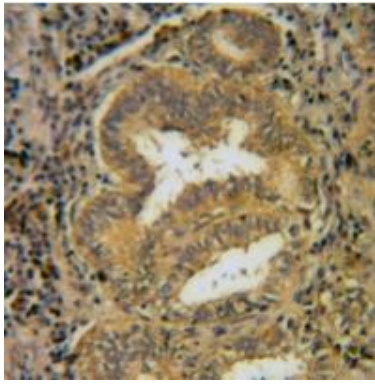
Application Details

WB (1/500 - 1/1000), IHC (1/50 - 1/100)

Images



Western blot analysis of CD296 expression in mouse muscle (A), mouse brain (B), rat muscle (C), rat brain (D) whole cell lysates



Immunohistochemical analysis of CD296 staining in human lung cancer formalin fixed paraffin embedded tissue section. The section was pre-treated using heat mediated antigen retrieval with sodium citrate buffer (pH 6.0). The section was then incubated with the antibody at room temperature and detected using an HRP conjugated compact polymer system. DAB was used as the chromogen. The section was then counterstained with haematoxylin and mounted with DPX.

Note: This product is for in vitro research use only