

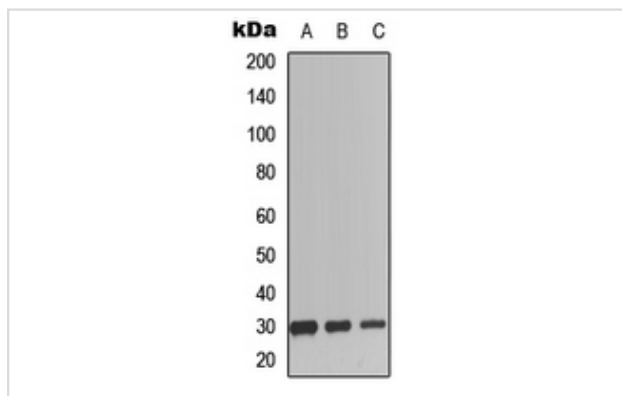
Description

Product Name	SCGF Antibody
Host Species	Rabbit
Clonality	Polyclonal
Purification	The antibody was purified by immunogen affinity chromatography.
Applications	WB
Species Reactivity	Hu,Ms
Specificity	Recognizes endogenous levels of SCGF protein.
Immunogen Description	KLH-conjugated synthetic peptide encompassing a sequence within the N-term region of human SCGF.
Target Name	CLEC11A
Other Names	CLECSF3; LSLCL; SCGF; C-type lectin domain family 11 member A; C-type lectin superfamily member 3; Lymphocyte secreted C-type lectin; Stem cell growth factor; p47
Accession No.	Swiss-Prot#:Q9Y240NCBI Gene ID:6320
Uniprot	Q9Y240
GeneID	6320;
Calculated MW	35KD
Concentration	1 mg/ml
Formulation	Liquid in 0.42% Potassium phosphate, 0.87% Sodium chloride, pH 7.3, 30% glycerol, and 0.01% sodium azide.
Storage	Store at -20°C

Application Details

WB (1/500 - 1/1000)

Images



Western blot analysis of SCGF expression in HEK293T (A), mouse spleen (B), rat spleen (C) whole cell lysates.

Note: This product is for in vitro research use only