

CD306 Antibody

Catalog No: #47942

Orders: order@signalwayantibody.comSupport: tech@signalwayantibody.com

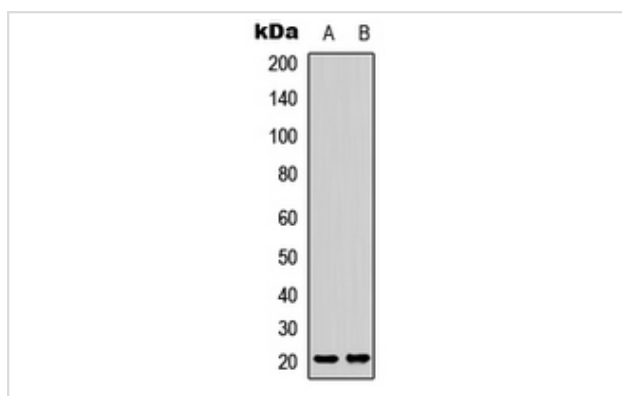
Description

Product Name	CD306 Antibody
Host Species	Rabbit
Clonality	Polyclonal
Purification	The antibody was purified by immunogen affinity chromatography.
Applications	WB
Species Reactivity	Hu,Ms,Rt
Specificity	Recognizes endogenous levels of CD306 protein.
Immunogen Description	KLH-conjugated synthetic peptide encompassing a sequence within the center region of human CD306.
Target Name	LAIR2
Other Names	CD306; Leukocyte-associated immunoglobulin-like receptor 2; LAIR-2; CD306
Accession No.	Swiss-Prot#:Q6ISS4NCBI Gene ID:3904
Uniprot	Q6ISS4
GeneID	3904;
Calculated MW	23KD
Concentration	1 mg/ml
Formulation	Liquid in 0.42% Potassium phosphate, 0.87% Sodium chloride, pH 7.3, 30% glycerol, and 0.01% sodium azide.
Storage	Store at -20°C

Application Details

WB (1/500 - 1/1000)

Images



Western blot analysis of CD306 expression in mouse spleen (A), rat spleen (B) whole cell lysates.

Note: This product is for in vitro research use only