

VPS72 Antibody

Catalog No: #47943

Orders: order@signalwayantibody.comSupport: tech@signalwayantibody.com

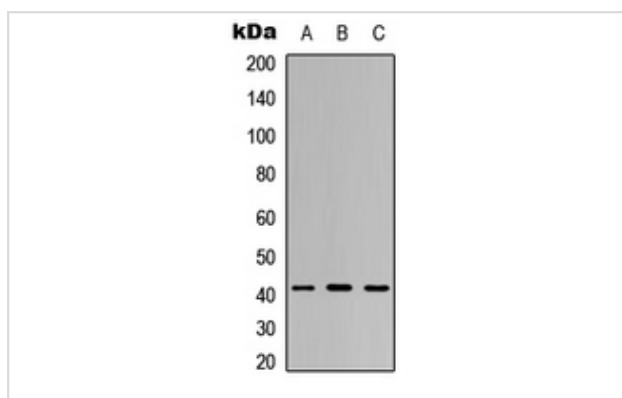
Description

Product Name	VPS72 Antibody
Host Species	Rabbit
Clonality	Polyclonal
Purification	The antibody was purified by immunogen affinity chromatography.
Applications	WB, IHC, IF/ICC
Species Reactivity	Hu,Ms
Specificity	Recognizes endogenous levels of VPS72 protein.
Immunogen Description	KLH-conjugated synthetic peptide encompassing a sequence within the center region of human VPS72.
Target Name	VPS72
Other Names	TCFL1; YL1; Vacuolar protein sorting-associated protein 72 homolog; Protein YL-1; Transcription factor-like 1
Accession No.	Swiss-Prot#:Q15906NCBI Gene ID:6944
Uniprot	Q15906
GeneID	6944;
Calculated MW	41KD
Concentration	1 mg/ml
Formulation	Liquid in 0.42% Potassium phosphate, 0.87% Sodium chloride, pH 7.3, 30% glycerol, and 0.01% sodium azide.
Storage	Store at -20°C

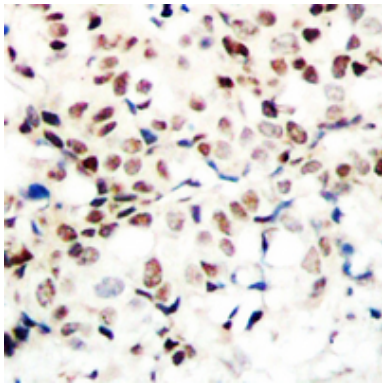
Application Details

WB (1/500 - 1/1000), IHC (1/100 - 1/200), IF/ICC (1/100 - 1/500)

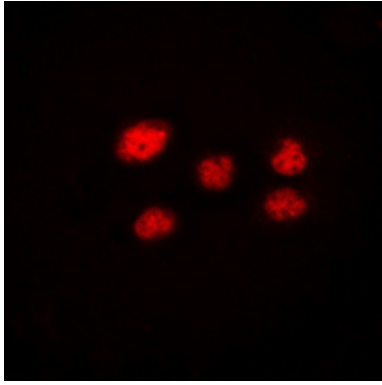
Images



Western blot analysis of VPS72 expression in NIH3T3 (A), mouse kidney (B), mouse heart (C) whole cell lysates.



Immunohistochemical analysis of VPS72 staining in human breast cancer formalin fixed paraffin embedded tissue section. The section was then incubated with the antibody at room temperature and detected using an HRP conjugated compact polymer system. DAB was used as the chromogen. The section was then counterstained with haematoxylin and mounted with DPX.



Immunofluorescent analysis of VPS72 staining in NIH3T3 cells. Formalin-fixed cells were permeabilized with 0.1% Triton X-100 in TBS for 5-10 minutes and blocked with 3% BSA-PBS for 30 minutes at room temperature. Cells were probed with the primary antibody in 3% BSA-PBS and incubated overnight at 4 C in a humidified chamber. Cells were washed with PBST and incubated with a DyLight 594-conjugated secondary antibody (red) in PBS at room temperature in the dark.

Note: This product is for in vitro research use only