

## Apolipoprotein O-Like Antibody

Catalog No: #47945

Orders: [order@signalwayantibody.com](mailto:order@signalwayantibody.com)Support: [tech@signalwayantibody.com](mailto:tech@signalwayantibody.com)

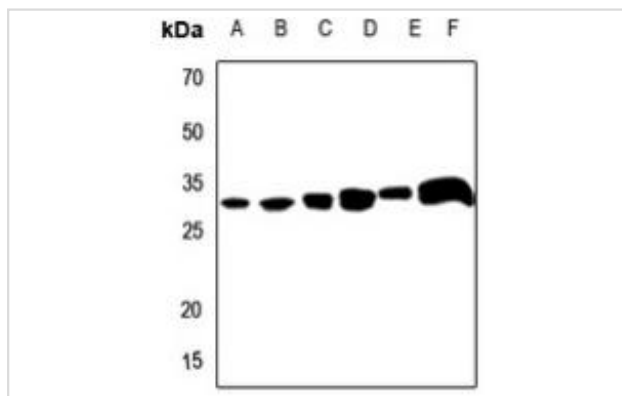
## Description

Product Name	Apolipoprotein O-Like Antibody
Host Species	Rabbit
Clonality	Polyclonal
Purification	The antibody was purified by immunogen affinity chromatography.
Applications	WB, IHC
Species Reactivity	Hu,Ms,Rt
Specificity	Recognizes endogenous levels of Apolipoprotein O-Like protein.
Immunogen Description	KLH-conjugated synthetic peptide encompassing a sequence within the C-term region of human Apolipoprotein O-Like.
Target Name	APOOL
Other Names	CXorf33; FAM121A; Apolipoprotein O-like; Protein FAM121A
Accession No.	Swiss-Prot#:Q6UXV4NCBI Gene ID:139322
Uniprot	Q6UXV4
GeneID	139322;
Calculated MW	30KD
Concentration	1 mg/ml
Formulation	Liquid in 0.42% Potassium phosphate, 0.87% Sodium chloride, pH 7.3, 30% glycerol, and 0.01% sodium azide.
Storage	Store at -20°C

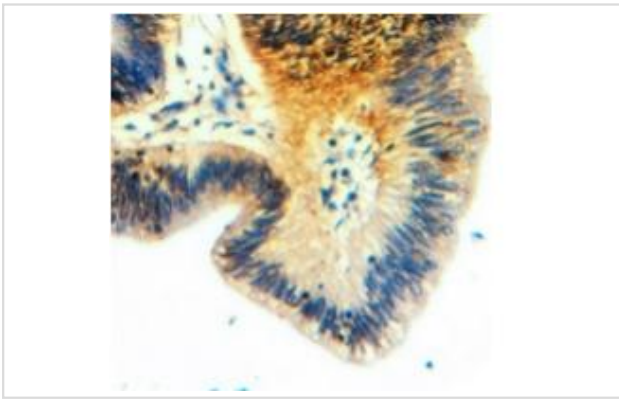
## Application Details

WB (1/500 - 1/1000), IHC (1/50 - 1/100)

## Images



Western blot analysis of Apolipoprotein O-Like expression in Hela (A), H446 (B), mouse kidney (C), mouse heart (D), rat kidney (E), rat heart (F) whole cell lysates.



Immunohistochemical analysis of Apolipoprotein O-Like staining in human colorectal cancer formalin fixed paraffin embedded tissue section. The section was pre-treated using heat mediated antigen retrieval with sodium citrate buffer (pH 6.0). The section was then incubated with the antibody at room temperature and detected using an HRP conjugated compact polymer system. DAB was used as the chromogen. The section was then counterstained with haematoxylin and mounted with DPX.

---

Note: This product is for in vitro research use only