

Alpha-1D Adrenergic Receptor Antibody

Catalog No: #47948

Orders: order@signalwayantibody.comSupport: tech@signalwayantibody.com

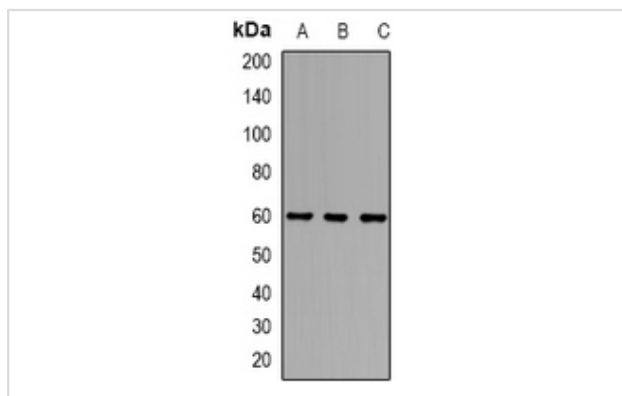
Description

Product Name	Alpha-1D Adrenergic Receptor Antibody
Host Species	Rabbit
Clonality	Polyclonal
Purification	The antibody was purified by immunogen affinity chromatography.
Applications	WB, IHC, IF/ICC
Species Reactivity	Hu
Specificity	Recognizes endogenous levels of Alpha-1D Adrenergic Receptor protein.
Immunogen Description	KLH-conjugated synthetic peptide encompassing a sequence within the C-term region of human Alpha-1D Adrenergic Receptor.
Target Name	ADRA1D
Other Names	ADRA1A; Alpha-1D adrenergic receptor; Alpha-1A adrenergic receptor; Alpha-1D adrenoreceptor; Alpha-1D adrenoceptor; Alpha-adrenergic receptor 1a
Accession No.	Swiss-Prot#:P25100NCBI Gene ID:146
Uniprot	P25100
GeneID	146;
Calculated MW	60KD
Concentration	1 mg/ml
Formulation	Liquid in 0.42% Potassium phosphate, 0.87% Sodium chloride, pH 7.3, 30% glycerol, and 0.01% sodium azide.
Storage	Store at -20°C

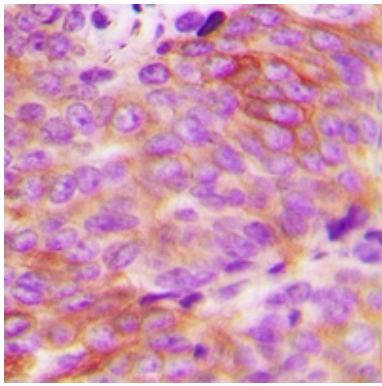
Application Details

WB (1/500 - 1/2000), IHC (1/50 - 1/200), IF/ICC (1/50 - 1/100)

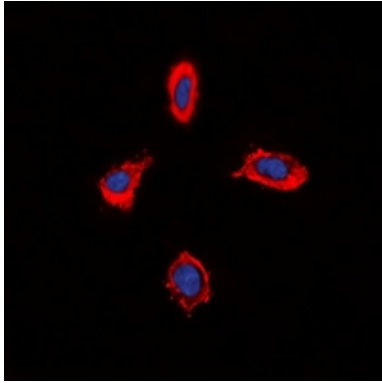
Images



Western blot analysis of Alpha-1D Adrenergic Receptor expression in H9C2 (A), Raw264.7 (B), U87MG (C) whole cell lysates



Immunohistochemical analysis of Alpha-1D Adrenergic Receptor staining in human breast cancer formalin fixed paraffin embedded tissue section. The section was then incubated with the antibody at room temperature and detected using an HRP conjugated compact polymer system. DAB was used as the chromogen. The section was then counterstained with haematoxylin and mounted with DPX.



Immunofluorescent analysis of Alpha-1D Adrenergic Receptor staining in MCF7 cells. Formalin-fixed cells were permeabilized with 0.1% Triton X-100 in TBS for 5-10 minutes and blocked with 3% BSA-PBS for 30 minutes at room temperature. Cells were probed with the primary antibody in 3% BSA-PBS and incubated overnight at 4 C in a humidified chamber. Cells were washed with PBST and incubated with a DyLight 594-conjugated secondary antibody (red) in PBS at room temperature in the dark. DAPI was used to stain the cell nuclei (blue).

Note: This product is for in vitro research use only