

SRSF5 Antibody

Catalog No: #47949

Orders: order@signalwayantibody.comSupport: tech@signalwayantibody.com

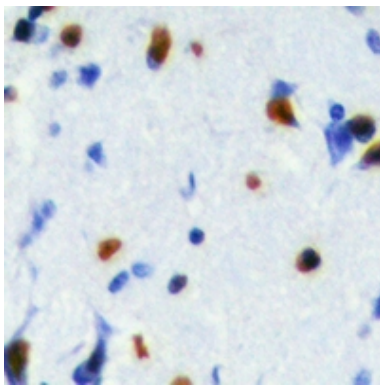
Description

Product Name	SRSF5 Antibody
Host Species	Rabbit
Clonality	Polyclonal
Purification	The antibody was purified by immunogen affinity chromatography.
Applications	WB, IHC, IF/ICC
Species Reactivity	Hu,Ms,Rt
Specificity	Recognizes endogenous levels of SRSF5 protein.
Immunogen Description	KLH-conjugated synthetic peptide encompassing a sequence within the center region of human SRSF5.
Target Name	SRSF5
Other Names	HRS; SFRS5; SRP40; Serine/arginine-rich splicing factor 5; Delayed-early protein HRS; Pre-mRNA-splicing factor SRP40; Splicing factor, arginine/serine-rich 5
Accession No.	Swiss-Prot#:Q13243NCBI Gene ID:6430
Uniprot	Q13243
GeneID	6430;
Calculated MW	31KD
Concentration	1 mg/ml
Formulation	Liquid in 0.42% Potassium phosphate, 0.87% Sodium chloride, pH 7.3, 30% glycerol, and 0.01% sodium azide.
Storage	Store at -20°C

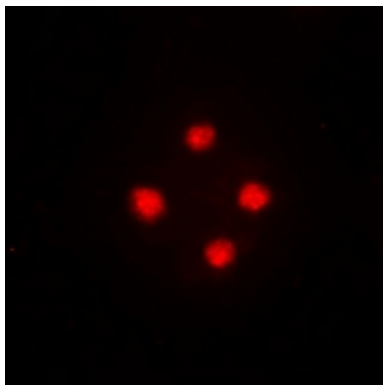
Application Details

WB (1/500 - 1/2000), IHC (1/50 - 1/200), IF/ICC (1/50 - 1/100)

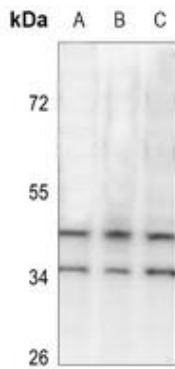
Images



Immunohistochemical analysis of SRSF5 staining in human brain formalin fixed paraffin embedded tissue section. The section was then incubated with the antibody at room temperature and detected using an HRP conjugated compact polymer system. DAB was used as the chromogen. The section was then counterstained with haematoxylin and mounted with DPX.



Immunofluorescent analysis of SRSF5 staining in HeLa cells. Formalin-fixed cells were permeabilized with 0.1% Triton X-100 in TBS for 5-10 minutes and blocked with 3% BSA-PBS for 30 minutes at room temperature. Cells were probed with the primary antibody in 3% BSA-PBS and incubated overnight at 4 C in a humidified chamber. Cells were washed with PBST and incubated with a DyLight 594-conjugated secondary antibody (red) in PBS at room temperature in the dark.



Western blot analysis of SRSF5 expression in Panc1 (A), HCT116 (B), SGC7901 (C) whole cell lysates.

Note: This product is for in vitro research use only