

TP53INP2 Antibody

Catalog No: #47950

Orders: order@signalwayantibody.comSupport: tech@signalwayantibody.com

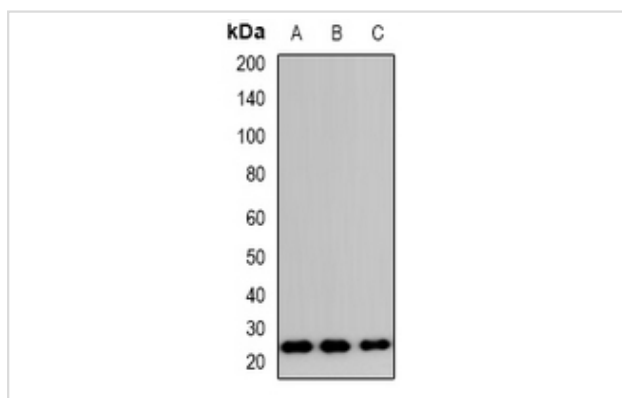
Description

Product Name	TP53INP2 Antibody
Host Species	Rabbit
Clonality	Polyclonal
Purification	The antibody was purified by immunogen affinity chromatography.
Applications	WB, IHC, IF/ICC
Species Reactivity	Hu,Ms,Rt
Specificity	Recognizes endogenous levels of TP53INP2 protein.
Immunogen Description	KLH-conjugated synthetic peptide encompassing a sequence within the N-term region of human TP53INP2.
Target Name	TP53INP2
Other Names	C20orf110; DOR; PINH; Tumor protein p53-inducible nuclear protein 2; Diabetes and obesity-regulated gene; p53-inducible protein U; PIG-U
Accession No.	Swiss-Prot#:Q8IXH6NCBI Gene ID:58476
Uniprot	Q8IXH6
GeneID	58476;
Calculated MW	23KD
Concentration	1 mg/ml
Formulation	Liquid in 0.42% Potassium phosphate, 0.87% Sodium chloride, pH 7.3, 30% glycerol, and 0.01% sodium azide.
Storage	Store at -20°C

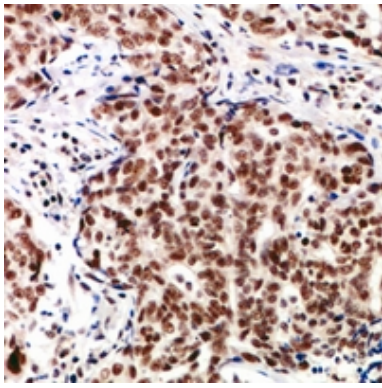
Application Details

WB (1/500 - 1/2000), IHC (1/50 - 1/200), IF/ICC (1/50 - 1/100)

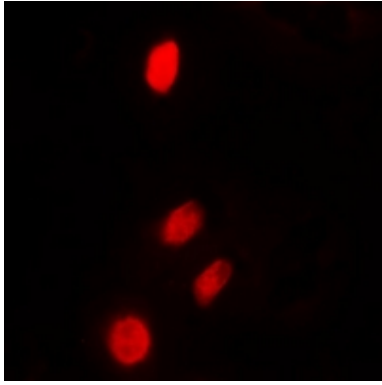
Images



Western blot analysis of TP53INP2 expression in HEK293T (A), HeLa (B), SPCA1 (C) whole cell lysates.



Immunohistochemical analysis of TP53INP2 staining in human breast cancer formalin fixed paraffin embedded tissue section. The section was then incubated with the antibody at room temperature and detected using an HRP conjugated compact polymer system. DAB was used as the chromogen. The section was then counterstained with haematoxylin and mounted with DPX.



Immunofluorescent analysis of TP53INP2 staining in HeLa cells. Formalin-fixed cells were permeabilized with 0.1% Triton X-100 in TBS for 5-10 minutes and blocked with 3% BSA-PBS for 30 minutes at room temperature. Cells were probed with the primary antibody in 3% BSA-PBS and incubated overnight at 4 C in a humidified chamber. Cells were washed with PBST and incubated with a DyLight 594-conjugated secondary antibody (red) in PBS at room temperature in the dark.

Note: This product is for in vitro research use only