

RGPD Antibody

Catalog No: #47979

Orders: order@signalwayantibody.comSupport: tech@signalwayantibody.com

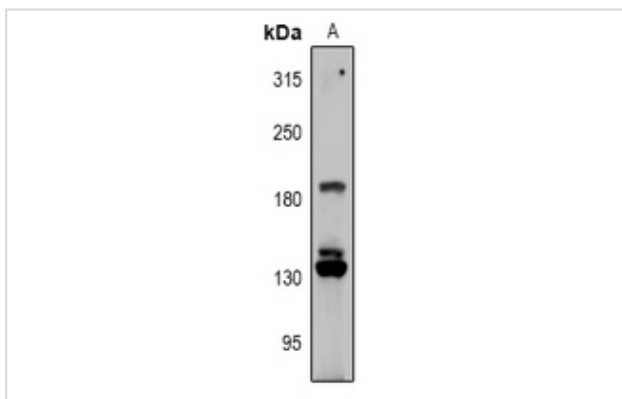
Description

Product Name	RGPD Antibody
Host Species	Rabbit
Clonality	Polyclonal
Purification	The antibody was purified by immunogen affinity chromatography.
Applications	WB
Species Reactivity	Hu,Rt
Specificity	Recognizes endogenous levels of RGPD1/2/3/4/5/8 protein.
Immunogen Description	KLH-conjugated synthetic peptide encompassing a sequence within the C-term region of human RGPD1/2/3/4/5/8.
Target Name	RGPD1; RGPD2; RGPD3; RGPD4; RGPD5; RGPD8
Other Names	RANBP2L6; RGP1; RANBP2-like and GRIP domain-containing protein 1; Ran-binding protein 2-like 6; RanBP2-like 6; RanBP2L6; RANBP2L2; RGP2; RANBP2-like and GRIP domain-containing protein 2; Ran-binding protein 2-like 2; RanBP2-like 2; RanBP2L2; RGP3; RanBP2-like and GRIP domain-containing protein 3; RGP4; RanBP2-like and GRIP domain-containing protein 4; RANBP2L1; RGP5; RGP7; RGPD7; RANBP2L2; RGP6; RANBP2-like and GRIP domain-containing protein 5/6; Ran-binding protein 2-like 1/2; RanBP2-like 1/2; RanBP2L1; RanBP2L2; Sperm membrane protein BS-63; RANBP2ALPHA; RANBP2L1; RANBP2L3; RANBP2-like and GRIP domain-containing protein 8; Ran-binding protein 2-like 3; RanBP2-like 3; RanBP2L3
Accession No.	Swiss-Prot#:P0DJD0; P0DJD1; A6NKT7; Q7Z3J3; Q99666; O14715NCBI Gene ID:729540; 84220; 729857
Uniprot	P0DJD0
GeneID	400966;
Calculated MW	198KD
Concentration	1 mg/ml
Formulation	Liquid in 0.42% Potassium phosphate, 0.87% Sodium chloride, pH 7.3, 30% glycerol, and 0.01% sodium azide.
Storage	Store at -20°C

Application Details

WB (1/500 - 1/1000)

Images



Western blot analysis of RGD expression in MCF7 (A) whole cell lysates

Note: This product is for in vitro research use only