

RCL1 Antibody

Catalog No: #47980

Orders: order@signalwayantibody.com

Support: tech@signalwayantibody.com

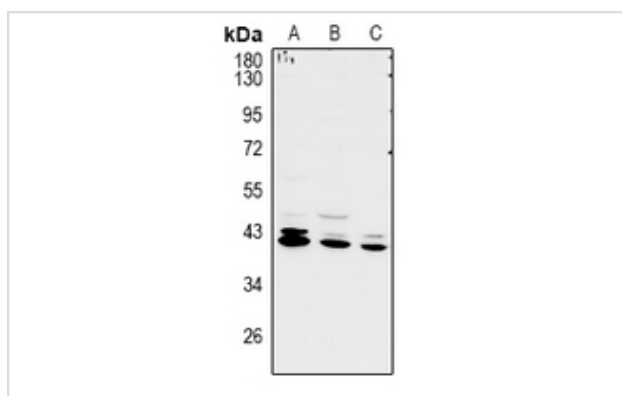
Description

Product Name	RCL1 Antibody
Host Species	Rabbit
Clonality	Polyclonal
Purification	The antibody was purified by immunogen affinity chromatography.
Applications	WB
Species Reactivity	Hu,Ms
Specificity	Recognizes endogenous levels of RCL1 protein.
Immunogen Description	KLH-conjugated synthetic peptide encompassing a sequence within the C-term region of human RCL1.
Target Name	RCL1
Other Names	RNAC; RPC2; RPCL1; RTC2; RNA 3'-terminal phosphate cyclase-like protein
Accession No.	Swiss-Prot#:Q9Y2P8NCBI Gene ID:10171
Uniprot	Q9Y2P8
GeneID	10171;
Calculated MW	41KD
Concentration	1 mg/ml
Formulation	Liquid in 0.42% Potassium phosphate, 0.87% Sodium chloride, pH 7.3, 30% glycerol, and 0.01% sodium azide.
Storage	Store at -20°C

Application Details

WB (1/500 - 1/1000)

Images



Western blot analysis of RCL1 expression in LO2 (A), A549 (B), COS7 (C) whole cell lysates

Note: This product is for in vitro research use only