

## SHD Antibody

Catalog No: #47984

Orders: [order@signalwayantibody.com](mailto:order@signalwayantibody.com)Support: [tech@signalwayantibody.com](mailto:tech@signalwayantibody.com)

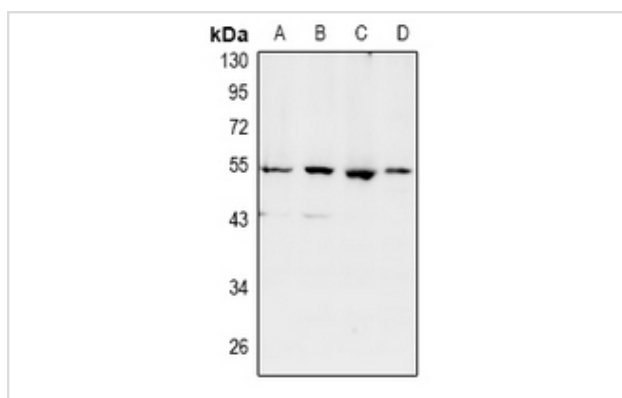
## Description

Product Name	SHD Antibody
Host Species	Rabbit
Clonality	Polyclonal
Purification	The antibody was purified by immunogen affinity chromatography.
Applications	WB
Species Reactivity	Hu,Rt
Specificity	Recognizes endogenous levels of SHD protein.
Immunogen Description	KLH-conjugated synthetic peptide encompassing a sequence within the N-term region of human SHD.
Target Name	SHD
Other Names	SH2 domain-containing adapter protein D
Accession No.	Swiss-Prot#:Q96IW2NCBI Gene ID:56961
Uniprot	Q96IW2
GeneID	56961;
Calculated MW	54,43KD
Concentration	1 mg/ml
Formulation	Liquid in 0.42% Potassium phosphate, 0.87% Sodium chloride, pH 7.3, 30% glycerol, and 0.01% sodium azide.
Storage	Store at -20°C

## Application Details

WB (1/500 - 1/1000)

## Images



Western blot analysis of SHD expression in LO2 (A), HEK293T (B), A549 (C), PC12 (D) whole cell lysates

Note: This product is for in vitro research use only