

Prolyl Endopeptidase Antibody

Catalog No: #47987

Orders: order@signalwayantibody.comSupport: tech@signalwayantibody.com

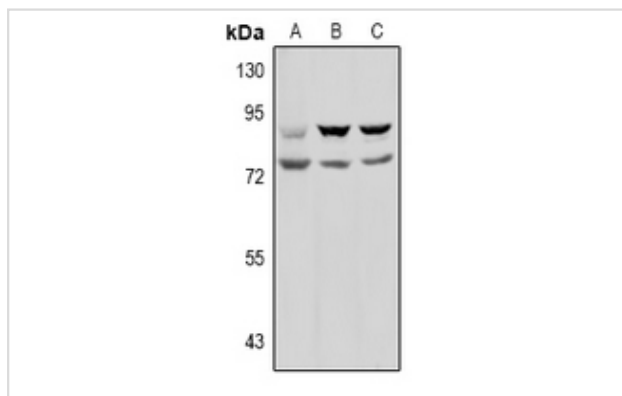
Description

| | |
|-----------------------|--|
| Product Name | Prolyl Endopeptidase Antibody |
| Host Species | Rabbit |
| Clonality | Polyclonal |
| Purification | The antibody was purified by immunogen affinity chromatography. |
| Applications | WB, IHC |
| Species Reactivity | Hu |
| Specificity | Recognizes endogenous levels of Prolyl Endopeptidase protein. |
| Immunogen Description | KLH-conjugated synthetic peptide encompassing a sequence within the N-term region of human Prolyl Endopeptidase. |
| Target Name | PREP |
| Other Names | Prolyl endopeptidase; PREP; PE; Post-proline cleaving enzyme; PEP |
| Accession No. | Swiss-Prot#:Q8N6D4NCBI Gene ID:5550 |
| Uniprot | Q8N6D4 |
| GeneID | :5550 |
| Calculated MW | 80KD |
| Concentration | 1 mg/ml |
| Formulation | Liquid in 0.42% Potassium phosphate, 0.87% Sodium chloride, pH 7.3, 30% glycerol, and 0.01% sodium azide. |
| Storage | Store at -20°C |

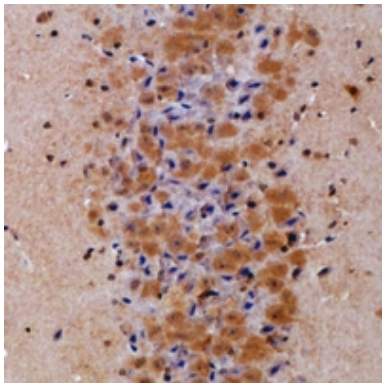
Application Details

WB (1/500 - 1/1000), IHC (1/50 - 1/100)

Images



Western blot analysis of Prolyl Endopeptidase expression in HEK293T (A), U87MG (B), MCF7 (C) whole cell lysates.



Immunohistochemical analysis of Prolyl Endopeptidase staining in mouse brain formalin fixed paraffin embedded tissue section. The section was then incubated with the antibody at room temperature and detected using an HRP conjugated compact polymer system. DAB was used as the chromogen. The section was then counterstained with haematoxylin and mounted with DPX.

Note: This product is for in vitro research use only