

## LDH-B Antibody

Catalog No: #48009

Package Size: #48009-1 50ul #48009-2 100ul

Orders: order@signalwayantibody.com

Support: tech@signalwayantibody.com

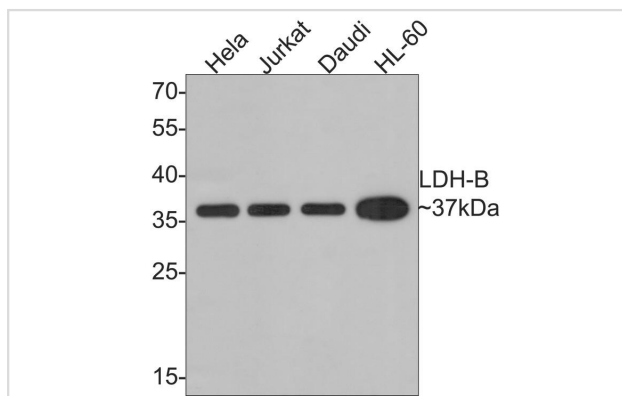
## Description

|                       |   |
|-----------------------|---|
| Product Name          | LDH-B Antibody  |
| Host Species          | Rabbit  |
| Clonality             | Polyclonal  |
| Purification          | Immunogen affinity purified   |
| Applications          | WB, IF-Cell, FC, IHC-P  |
| Species Reactivity    | Hu,Ms,Rt  |
| Immunogen Description | Synthetic peptide within Human LDH-B  |
| Other Names           | Epididymis secretory protein Li 281 antibody HEL S 281 antibody L lactate dehydrogenase B chain antibody L-lactate dehydrogenase B chain antibody Lactate dehydrogenase H chain antibody LDH B antibody LDH H antibody LDH heart subunit antibody LDH-B antibody LDH-H antibody LDHB antibody LDHB_HUMAN antibody LDHBD antibody LDHH antibody Renal carcinoma antigen NY REN 46 antibody Renal carcinoma antigen NY-REN-46 antibody TRG-5 antibody TRG5 antibody |
| Accession No.         | Swiss-Prot#:P07195  |
| Uniprot               | P07195  |
| GeneID                | 3945;   |
| Calculated MW         | 37 kDa  |
| Concentration         | 1mg/ml  |
| Formulation           | 1*PBS (pH7.4), 0.2% BSA, 25% Glycerol. Preservative: 0.05% Sodium Azide.  |
| Storage               | Store at +4°C after thawing. Aliquot store at -20°C or -80°C. Avoid repeated freeze / thaw cycles.  |

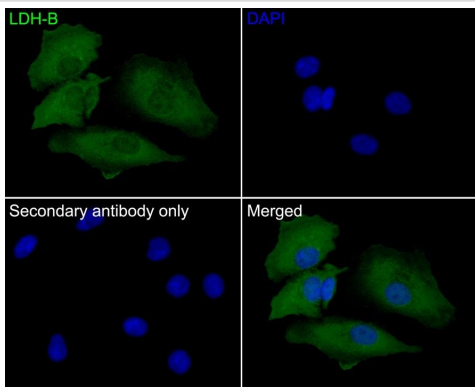
## Application Details

WB 1:500-1:1000 IF-Cell 1:200 FC 1:500-1:1000 IHC-P 1:200-1:500

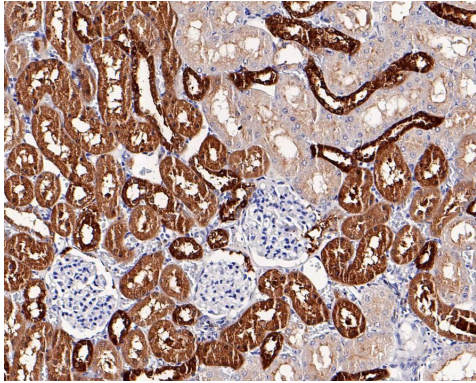
## Images



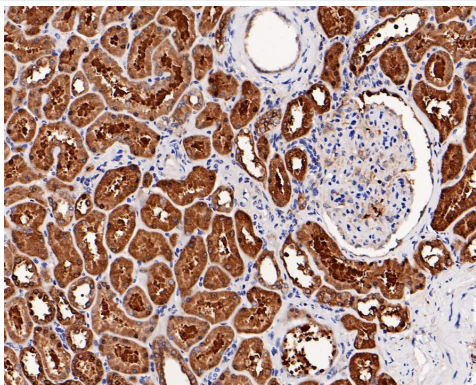
Western blot analysis of LDH-B on different lysates with Rabbit anti-LDH-B antibody at 1/500 dilution. Lane 1: HeLa cell lysate Lane 2: Jurkat cell lysate Lane 3: Daudi cell lysate Lane 4: HL-60 cell lysate Lysates/proteins at 10 µg/Lane. Exposure time: 2 minutes; 12% SDS-PAGE gel.



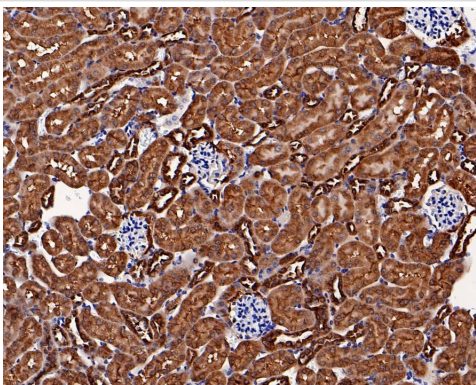
Immunocytochemistry analysis of A549 cells labeling LDHB with Rabbit anti-LDH-B antibody at 1/200 dilution.



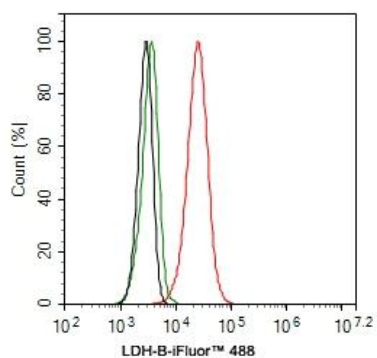
Immunohistochemical analysis of paraffin-embedded rat kidney tissue with Rabbit anti-LDH-B antibody at 1/200 dilution.



Immunohistochemical analysis of paraffin-embedded human kidney tissue with Rabbit anti-LDH-B antibody at 1/200 dilution.



Immunohistochemical analysis of paraffin-embedded mouse kidney tissue with Rabbit anti-LDH-B antibody at 1/200 dilution.



Flow cytometric analysis of A549 cells labeling LDH-B.

## Background

---

Lactate dehydrogenase (LDH) is an enzyme present in a wide variety of organisms, including plants and animals. It catalyses the interconversion of pyruvate and lactate with concomitant interconversion of NADH and NAD<sup>+</sup>. In medicine, LDH is often used as a marker of tissue breakdown as LDH is abundant in red blood cells and can function as a marker for hemolysis. In mammals, three types of LDH subunits (35 kDa) are encoded by the genes Ldh-A, Ldh-B, and Ldh-C. Lactate dehydrogenase B (LDH-B, heart subunit, LDH-H) is involved in the conversion of L-lactate and NAD to pyruvate and NADH and it is predominantly localized in the heart tissue. Similar to other LDH subunit, LDH-B is considered to be an important marker for germ cell tumor.

---

Note: This product is for in vitro research use only