

PAI-3 Antibody

Catalog No: #48021



Package Size: #48021-1 50ul #48021-2 100ul

Orders: order@signalwayantibody.com
Support: tech@signalwayantibody.com

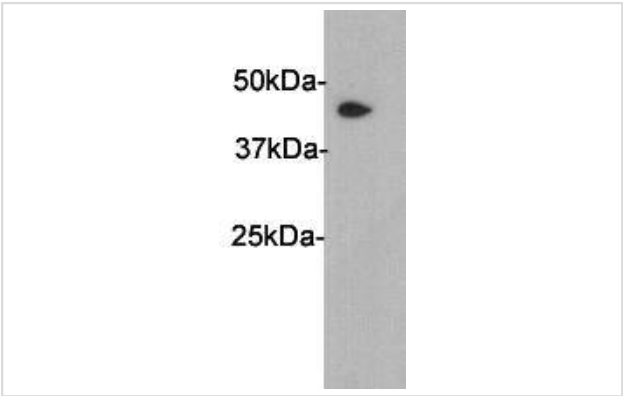
Description

Product Name	PAI-3 Antibody
Host Species	Rabbit
Clonality	Polyclonal
Purification	Immunogen affinity purified
Applications	WB, ICC
Species Reactivity	Hu
Immunogen Description	peptide
Other Names	Acrosomal serine protease inhibitor antibody IPSP antibody IPSP_HUMAN antibody PAI 3 antibody PAI-3 antibody PAI3 antibody PCI antibody PCI-B antibody PLANH 3 antibody PLANH3 antibody Plasma serine protease inhibitor antibody Plasminogen activator inhibitor 3 antibody Plasminogen activator inhibitor III antibody PROCI antibody Protein C inhibitor antibody Serpin A5 antibody Serpin peptidase inhibitor clade A (alpha 1 antiproteinase antitrypsin) member 5 antibody Serpin peptidase inhibitor clade A member 5 antibody Serpina5 antibody
Accession No.	Swiss-Prot#:P05154
Uniprot	P05154
GeneID	5104;
Calculated MW	46kDa
Formulation	1*TBS (pH7.4), 1%BSA, 40%Glycerol. Preservative: 0.05% Sodium Azide.
Storage	Store at -20°C

Application Details

WB: 1:200

Images



Western blot analysis on human liver using anti-PAI3 polyclonal antibody.

Background

PAI-3 also called Protein C inhibitor (PCI) was originally described in plasma as an inhibitor of the anticoagulant serine protease activated protein C. PCI is present not only in plasma, but also in urine and in many other body fluids and secretions. The highest PCI concentrations have been described in seminal plasma (~200 µg/ml). The inhibition is regulated by glycosaminoglycans, such as heparin and heparan sulphate, and several polyanions. As well as its roles in the regulation of hemostasis and fertilisation, Protein C Inhibitor is involved in cell inflammation, proliferation, apoptosis, tumor cell migration, invasion, and metastasis.

References

Note: This product is for in vitro research use only