

Ribosomal Protein S6 Polyclonal Antibody

Catalog No: #41410

Package Size: #41410-1 50ul #41410-2 100ul

Orders: order@signalwayantibody.com

Support: tech@signalwayantibody.com

Description

Product Name	Ribosomal Protein S6 Polyclonal Antibody
Host Species	Rabbit
Clonality	Polyclonal
Purification	The antibody was affinity-purified from rabbit antiserum by affinity-chromatography using epitope-specific immunogen.
Applications	WB IF ELISA
Species Reactivity	Hu Ms Rt
Specificity	Ribosomal Protein S6 Polyclonal Antibody detects endogenous levels of Ribosomal Protein S6 protein.
Immunogen Type	peptide
Immunogen Description	Synthesized peptide derived from human Ribosomal Protein S6 around the non-phosphorylation site of S235.
Target Name	Ribosomal Protein S6
Other Names	RPS6; OK/SW-cl.2; 40S ribosomal protein S6; Phosphoprotein NP33
Accession No.	Swiss-Prot: P62753NCBI Gene ID: 6194
Uniprot	P62753
GeneID	6194;
SDS-PAGE MW	29kd
Concentration	1mg/ml
Formulation	Liquid in PBS containing 50% glycerol, 0.5% BSA and 0.02% sodium azide.
Storage	Store at -20°C/1 year

Application Details

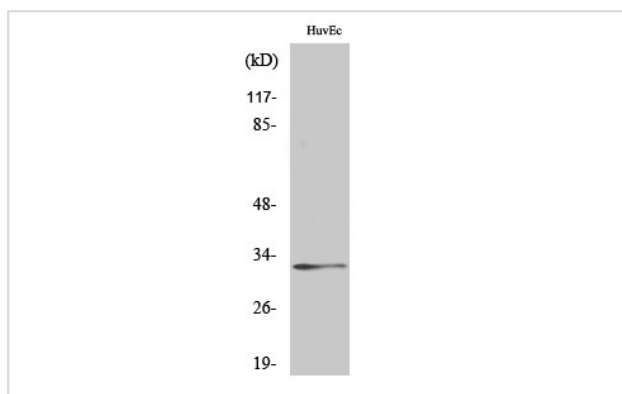
Western Blot: 1/500 - 1/2000.

Immunofluorescence: 1/200 - 1/1000.

ELISA: 1/20000.

Not yet tested in other applications.

Images



Western Blot analysis of HuvEc cells using Ribosomal Protein S6 Polyclonal Antibody

Note: This product is for in vitro research use only