

## HA Tag Antibody

Catalog No: #48040

Package Size: #48040-1 50ul #48040-2 100ul

Orders: [order@signalwayantibody.com](mailto:order@signalwayantibody.com)Support: [tech@signalwayantibody.com](mailto:tech@signalwayantibody.com)

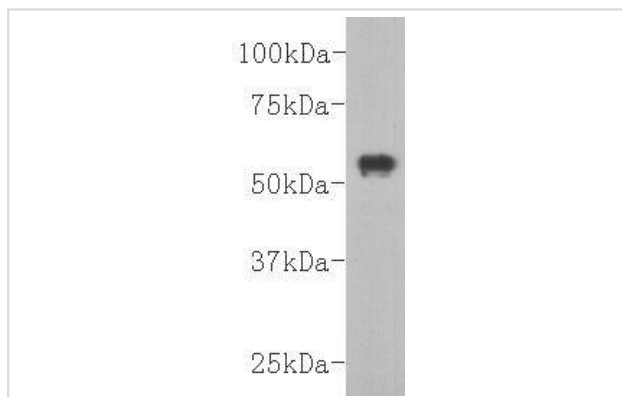
## Description

Product Name	HA Tag Antibody
Host Species	Rabbit
Clonality	Polyclonal
Purification	Immunogen affinity purified
Applications	WB
Immunogen Description	peptide
Other Names	HA epitope tag antibody HA1 antibody HA2 antibody hemagglutinin antibody Hemagglutinin HA1 chain antibody Hemagglutinin HA2 chain antibody
Accession No.	Swiss-Prot#:
Calculated MW	40 kDa
Formulation	1*TBS (pH7.4), 1%BSA, 40%Glycerol. Preservative: 0.05% Sodium Azide.
Storage	Store at -20°C

## Application Details

WB: 1:10,000

## Images



Western blot analysis on YPYDVDPDYA Tag recombinant protein (55kDa).

## Background

Human influenza hemagglutinin (HA) is a surface glycoprotein required for the infectivity of the human virus. The HA tag is derived from the HA molecule corresponding to amino acids 98-106. This antibody is used to detect proteins that are tagged with HA epitope (YPYDVDPDYA) and are expressed in prokaryotic and eukaryotic cells.

## References

---

Note: This product is for in vitro research use only