

Rit1 Polyclonal Antibody

Catalog No: #41413

Package Size: #41413-1 50ul #41413-2 100ul

Orders: order@signalwayantibody.com

Support: tech@signalwayantibody.com

Description

Product Name	Rit1 Polyclonal Antibody
Host Species	Rabbit
Clonality	Polyclonal
Purification	The antibody was affinity-purified from rabbit antiserum by affinity-chromatography using epitope-specific immunogen.
Applications	WB ELISA
Species Reactivity	Hu Ms
Specificity	Rit1 Polyclonal Antibody detects endogenous levels of Rit1 protein.
Immunogen Type	peptide
Immunogen Description	Synthesized peptide derived from the C-terminal region of human Rit1.
Target Name	Rit1
Other Names	RIT1; RIBB; RIT; ROC1; GTP-binding protein Rit1; Ras-like protein expressed in many tissues; Ras-like without CAAX protein 1
Accession No.	Swiss-Prot: Q92963NCBI Gene ID: 6016
Uniprot	Q92963
GeneID	6016;
SDS-PAGE MW	25kd
Concentration	1mg/ml
Formulation	Liquid in PBS containing 50% glycerol, 0.5% BSA and 0.02% sodium azide.
Storage	Store at -20°C/1 year

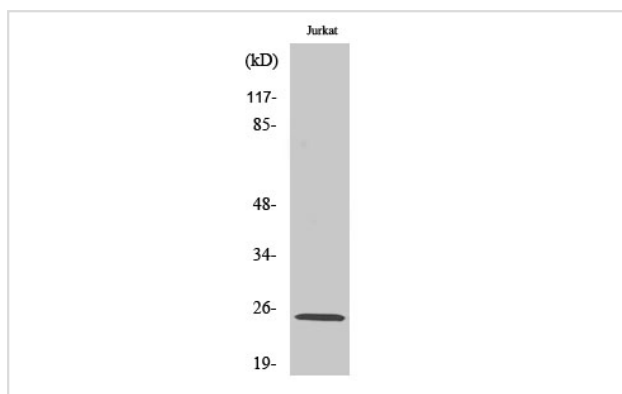
Application Details

Western Blot: 1/500 - 1/2000.

ELISA: 1/10000.

Not yet tested in other applications.

Images



Western Blot analysis of Jurkat cells using Rit1 Polyclonal Antibody

Note: This product is for in vitro research use only