

## Human lambda light chain Antibody

Catalog No: #48057

Package Size: #48057-1 50ul #48057-2 100ul

Orders: [order@signalwayantibody.com](mailto:order@signalwayantibody.com)Support: [tech@signalwayantibody.com](mailto:tech@signalwayantibody.com)

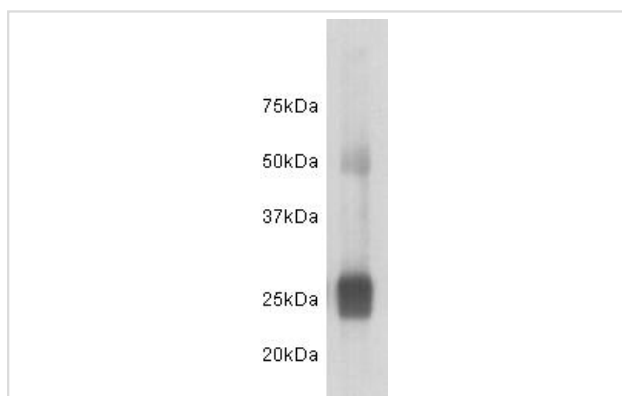
## Description

Product Name	Human lambda light chain Antibody
Host Species	Mouse
Clonality	Monoclonal
Clone No.	36-59
Purification	Affinity purified
Applications	WB
Species Reactivity	Hu
Immunogen Description	Human IgG
Accession No.	Swiss-Prot#:
Calculated MW	25 kDa
Formulation	1*TBS (pH7.4), 0.5%BSA, 40%Glycerol. Preservative: 0.05% Sodium Azide.
Storage	Store at -20°C

## Application Details

WB: 1:1000

## Images



Western blot analysis on human IgG using anti-human lambda light chain antibody

## References

Note: This product is for in vitro research use only