

## LT-alpha Antibody

Catalog No: #48058

Package Size: #48058-1 50ul #48058-2 100ul

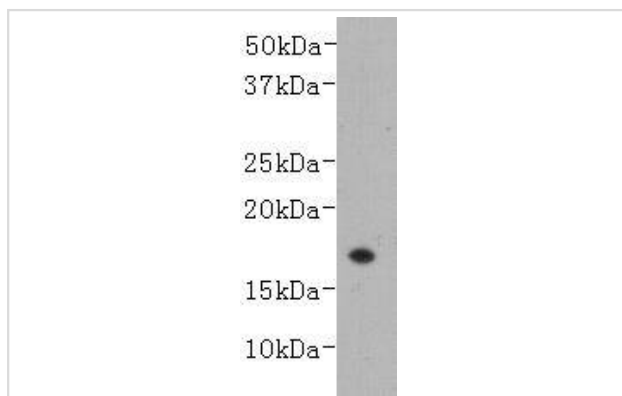
Orders: [order@signalwayantibody.com](mailto:order@signalwayantibody.com)Support: [tech@signalwayantibody.com](mailto:tech@signalwayantibody.com)

## Description

Product Name	LT-alpha Antibody
Host Species	Mouse
Clonality	Monoclonal
Clone No.	6-C10-10
Purification	ProA affinity purified
Applications	WB
Species Reactivity	Hu, Rt
Immunogen Description	peptide
Other Names	LTalpha antibody DIF antibody LT alpha antibody LT antibody LT-alpha antibody Lta antibody Lymphotoxin alpha (TNF superfamily, member 1) antibody Lymphotoxin alpha antibody Lymphotoxin-alpha antibody TNF B antibody TNF superfamily member 1 antibody TNF, lymphocyte-derived antibody TNF-beta antibody TNFB antibody TNFB_HUMAN antibody TNFbeta antibody TNFSF1 antibody TNLG1E antibody Tumor necrosis factor beta antibody tumor necrosis factor ligand 1E antibody Tumor necrosis factor ligand superfamily member 1 antibody
Accession No.	Swiss-Prot#:P01374
Uniprot	P01374
GeneID	4049;
Calculated MW	18 kDa
Formulation	1*TBS (pH7.4), 0.5%BSA, 25%Glycerol. Preservative: 0.05% Sodium Azide.
Storage	Store at -20°C

## Application Details

## Images



Western blot analysis on recombinant LT-alpha (TNF- $\beta$ ) using anti- LT-alpha monoclonal antibody.

## Background

---

Lymphotoxin-alpha (LTA), a member of the tumor necrosis factor (TNF) family of cytokines, was initially isolated on the basis of an anti-tumor activity. LTA plays a key role in communication between lymphocytes and stromal cells, thereby eliciting cytotoxic effects on cancer cells. It induces the expression of vascular cell-adhesion molecule 1 (VCAM1) on vascular endothelial cells and recruits natural killer (NK) cells to parenchymal organs and tumor lesions.

## References

---

---

Note: This product is for in vitro research use only