

## Human Serum Albumin Antibody

Catalog No: #48062

Package Size: #48062-1 50ul #48062-2 100ul

Orders: [order@signalwayantibody.com](mailto:order@signalwayantibody.com)Support: [tech@signalwayantibody.com](mailto:tech@signalwayantibody.com)

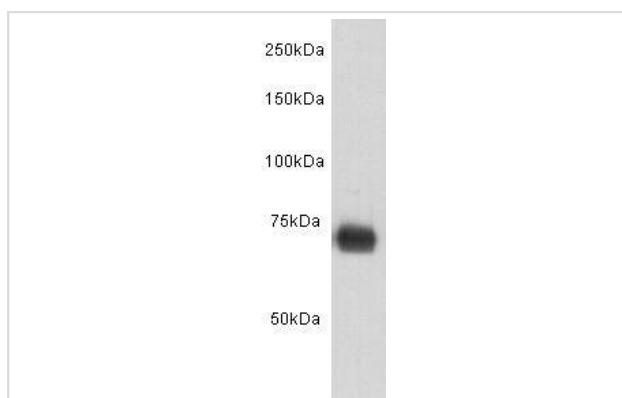
## Description

Product Name	Human Serum Albumin Antibody
Host Species	Mouse
Clonality	Monoclonal
Clone No.	8-A3
Purification	ProA affinity purified
Applications	WB
Species Reactivity	Hu
Immunogen Description	protein
Other Names	alb antibody ALBU_HUMAN antibody Albumin (32 AA) antibody Albumin (AA 34) antibody Albumin antibody Analbuminemia antibody Bisalbuminemia antibody Cell growth inhibiting protein 42 antibody DKFZp779N1935 antibody Dysalbuminemic hyperthyroxinemia antibody Growth inhibiting protein 20 antibody HSA antibody Hyperthyroxinemia dysalbuminemic antibody PRO0883 antibody PRO0903 antibody PRO1341 antibody Serum albumin antibody
Accession No.	Swiss-Prot#:P02768
Uniprot	P02768
GeneID	213;
Calculated MW	70kDa
Formulation	1*TBS (pH7.4), 1%BSA, 40%Glycerol. Preservative: 0.05% Sodium Azide.
Storage	Store at -20°C

## Application Details

WB: 1:2,000

## Images



Western blot analysis on HSA protein using anti-HSA Mouse mAb (Cat. # M0809-4).

## Background

---

HSA is the most common protein in serum. It is produced in the liver and the concentration in serum is 35-50 mg/ml. HSA consists of a single polypeptide chain of 584 aminoacids, stabilized by 17 disulfide bridges. HSA is often used as a carrier molecule because of its binding capacity, and thus mainly functions as the regulator of the colloidal osmotic pressure of the blood. HSA binds a wide variety of hydrophobic ligands including fatty acids, bilirubin, thyroxine and hemin.

## References

---

---

Note: This product is for in vitro research use only