

Rabbit IgG heavy chain(Fc fragment) Antibody

Catalog No: #48063

Package Size: #48063-1 50ul #48063-2 100ul

Orders: order@signalwayantibody.com

Support: tech@signalwayantibody.com

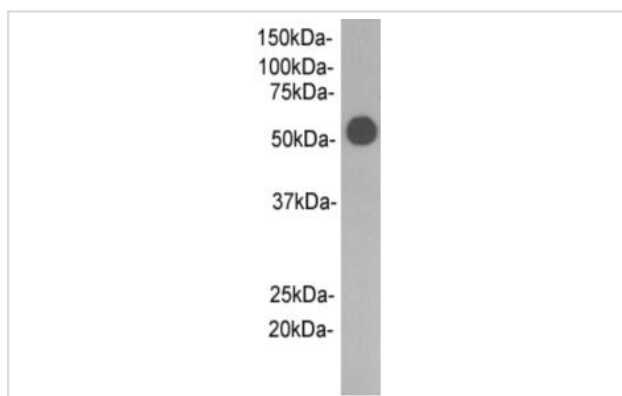
Description

Product Name	Rabbit IgG heavy chain(Fc fragment) Antibody
Host Species	Mouse
Clonality	Monoclonal
Clone No.	A6-B8
Purification	Affinity purified
Applications	WB
Species Reactivity	Rabbit
Immunogen Description	Rabbit IgG
Accession No.	Swiss-Prot#:
Calculated MW	50 kDa
Formulation	1*TBS (pH7.4), 0.5%BSA, 25%Glycerol. Preservative: 0.05% Sodium Azide.
Storage	Store at -20°C

Application Details

WB: 1:5,000

Images



Western blot analysis on rabbit serum using anti-Rabbit IgG heavy chain(Fc fragment) Mouse mAb (Cat. # M0902-5).

Background

The fundamental structure of IgG contains two identical heavy chains of about 50 kDa and two identical light chains of about 25 kDa, thus tetrameric quaternary structure. Light chain, which is usually same in a natural IgG molecule, includes κ chain and λ chain, but κ or λ antibody can exist in one body simultaneously. A heavy chain includes Fab- and Fc-Fragments. This antibody can recognize rabbit IgG Fc fragments of heavy chains, which is a matched antibody-pair with product cat # M1009-6.

References

Note: This product is for in vitro research use only