

## Human IgG kapa light chain Antibody

Catalog No: #48064

Package Size: #48064-1 50ul #48064-2 100ul

Orders: [order@signalwayantibody.com](mailto:order@signalwayantibody.com)Support: [tech@signalwayantibody.com](mailto:tech@signalwayantibody.com)

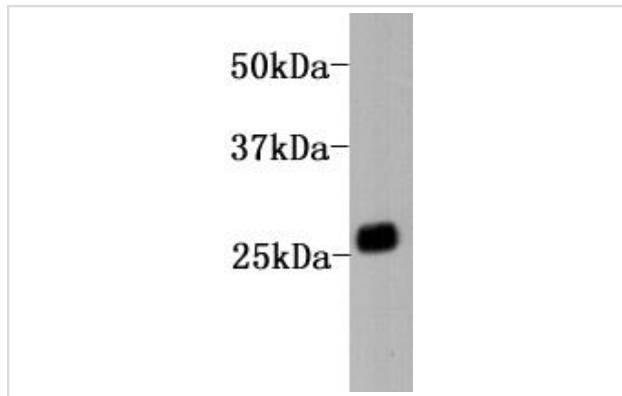
## Description

|                       |  |
|-----------------------|--|
| Product Name          | Human IgG kapa light chain Antibody                                    |
| Host Species          | Mouse  |
| Clonality             | Monoclonal   |
| Purification          | Affinity purified  |
| Applications          | WB   |
| Species Reactivity    | Hu   |
| Immunogen Description | Human IgG  |
| Accession No.         | Swiss-Prot#:   |
| Calculated MW         | 25 kDa   |
| Formulation           | 1*TBS (pH7.4), 0.5%BSA, 40%Glycerol. Preservative: 0.05% Sodium Azide. |
| Storage               | Store at -20°C   |

## Application Details

WB: 1:2,000-1:5,000

## Images



Western blot analysis on huamn IgG using anti-human kappa light chain antibody.

## Background

IgG is the most abundant immunoglobulin and is approximately equally distributed in blood and in tissue liquids, constituting 75% of serum immunoglobulins in humans. There are 4 subclasses: IgG1 (66%), IgG2 (23%), IgG3 (7%) and IgG4 (4%). This is the only isotype that can pass through the human placenta, thereby providing protection to the fetus in its first weeks of life before its own immune system has developed. This antibody reacts with kappa-light-chain of human IgG.

## References

---

Note: This product is for in vitro research use only