

## kinase D-interacting substrate 220 Antibody

Catalog No: #48066

Package Size: #48066-1 50ul #48066-2 100ul

Orders: order@signalwayantibody.com

Support: tech@signalwayantibody.com

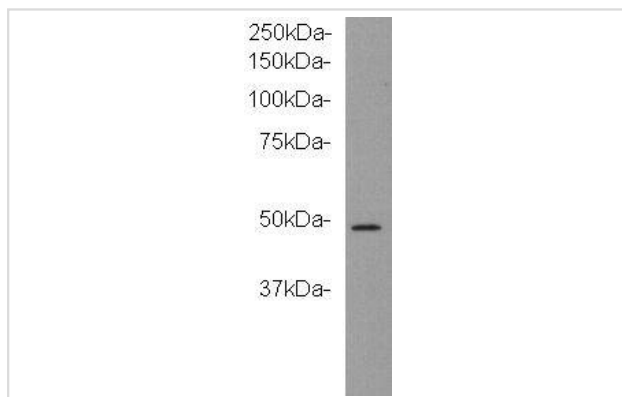
## Description

Product Name	kinase D-interacting substrate 220 Antibody
Host Species	Mouse
Clonality	Monoclonal
Clone No.	3-B6
Purification	ProA affinity purified
Applications	WB, ICC, IHC
Species Reactivity	Ms
Immunogen Description	protein
Accession No.	Swiss-Prot#:
Calculated MW	199kDa
Formulation	1*TBS (pH7.4),0.5%BSA, 40%Glycerol. Preservative: 0.05% Sodium Azide.
Storage	Store at -20°C

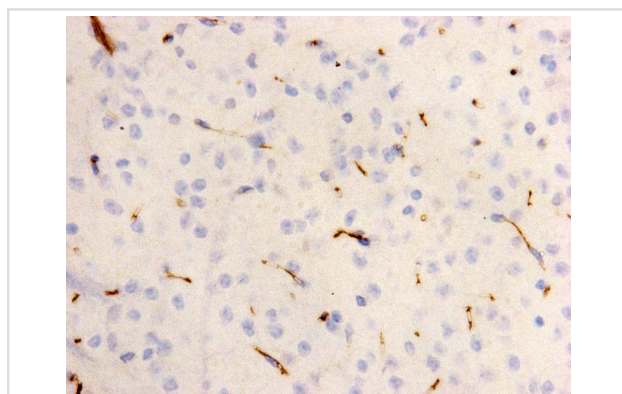
## Application Details

WB: 1:1,000-1:10,000 IHC: 1:50 ICC: 1:100

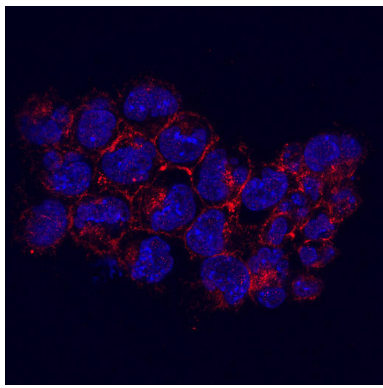
## Images



Western blot analysis on recombinant protein using anti-Kidins220 Mouse mAb (Cat. # M0910-4).



Immunohistochemical analysis of paraffin-embedded mouse brain tissue using anti-Kidins220 Mouse mAb (Cat. # M0910-4).



Immunofluorescent staining of F9 cells using anti-Kidins220 Mouse mAb (Cat. # M0910-4).

## Background

Kinase D-interacting substrate 220 (Kidins220), also known as ARMS (ankyrin-rich membrane spanning) is an integral plasma membrane protein predominantly expressed in brain and neurons that presents a polarized location in neural cells, concentrating at the tip of extending neurites and in plasma membrane micro-domains corresponding to lipid rafts. The primary amino acid sequence of Kidins220 reveals 11 ankyrin repeats, 4 trans-membrane domains, a proline-rich region, a sterile- $\alpha$  motif (or SAM) domain, and a type I postsynaptic density-95/discs large/zonula occludens-1 (PDZ)-binding motif at the very C-terminus.

## References

Note: This product is for in vitro research use only