

SCAI Antibody

Catalog No: #48070

Package Size: #48070-1 50ul #48070-2 100ul

Orders: order@signalwayantibody.com

Support: tech@signalwayantibody.com

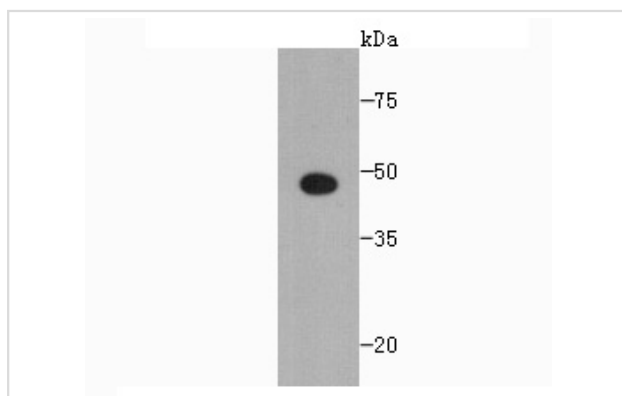
Description

Product Name	SCAI Antibody
Host Species	Mouse
Clonality	Monoclonal
Clone No.	7-A4
Applications	WB, ICC, IHC
Species Reactivity	Hu
Immunogen Description	Recombinant protein
Other Names	C9orf126 antibody FLJ11758 antibody FLJ36664 antibody MGC120525 antibody MGC120526 antibody MGC120528 antibody NET40 antibody Protein SCAI antibody SCAI antibody SCAI_HUMAN antibody Suppressor of cancer cell invasion antibody Suppressor of cancer cell invasion protein antibody
Accession No.	Swiss-Prot#:Q8N9R8
Uniprot	Q8N9R8
GeneID	286205;
Calculated MW	48 kDa
Formulation	1*TBS (pH7.4), 1%BSA, 40%Glycerol. Preservative: 0.23% Sodium Azide.
Storage	Store at -20°C

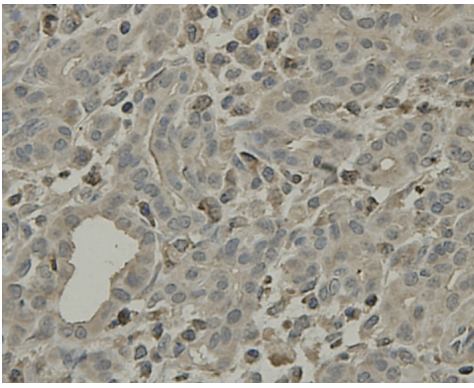
Application Details

WB: 1:1,000-1:2,000 IHC: 1:50-1:200 ICC: 1:50-1:200

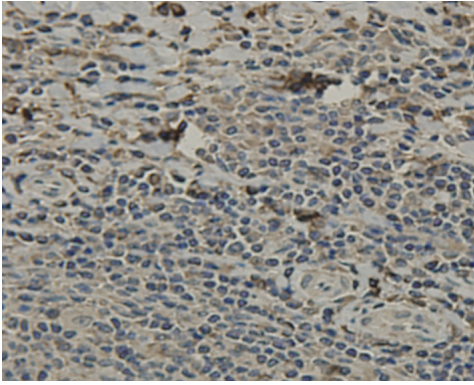
Images



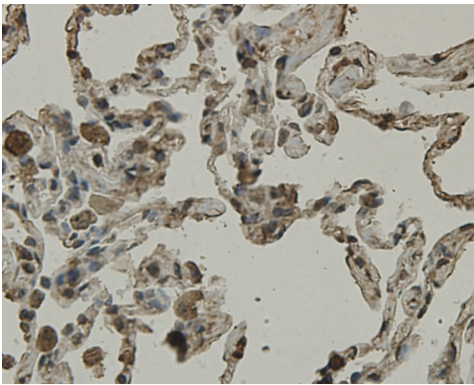
Western blot analysis of SCAI on Recombinant protein using anti-SCAI antibody at 1/1,000 dilution.



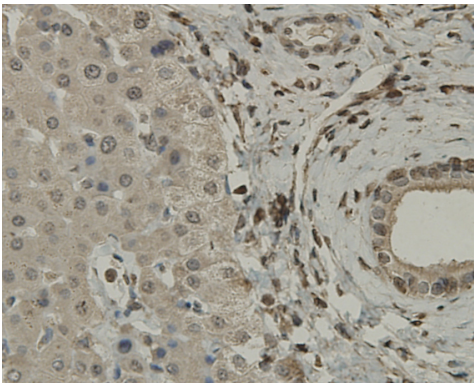
Immunohistochemical analysis of paraffin-embedded human pancreas tissue using anti-SCAI antibody. Counter stained with hematoxylin.



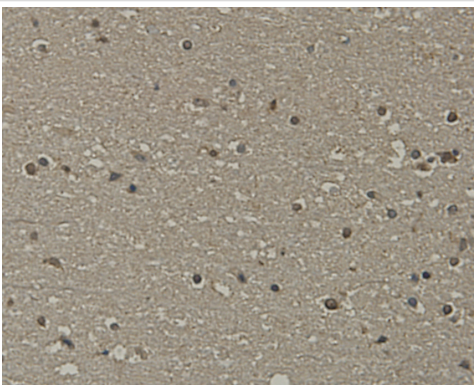
Immunohistochemical analysis of paraffin-embedded human tonsil tissue using anti-SCAI antibody. Counter stained with hematoxylin.



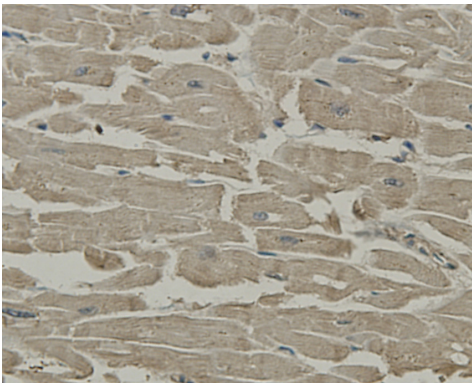
Immunohistochemical analysis of paraffin-embedded human lung tissue using anti-SCAI antibody. Counter stained with hematoxylin.



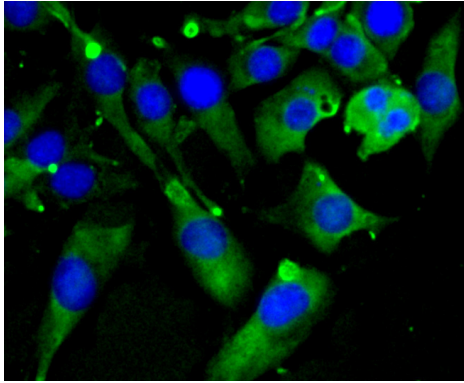
Immunohistochemical analysis of paraffin-embedded human liver tissue using anti-SCAI antibody. Counter stained with hematoxylin.



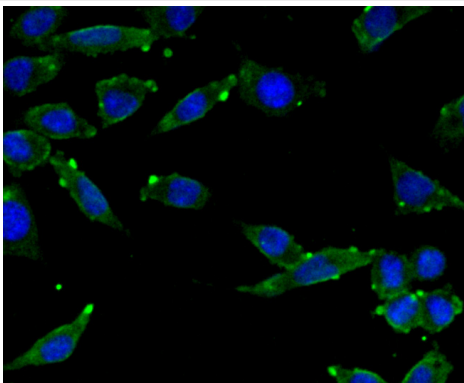
Immunohistochemical analysis of paraffin-embedded human brain tissue using anti-SCAI antibody. Counter stained with hematoxylin.



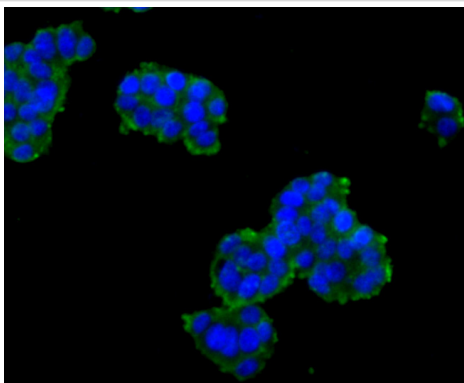
Immunohistochemical analysis of paraffin-embedded human heart tissue using anti-SCAI antibody. Counter stained with hematoxylin.



ICC staining SCAI in SHG-44 cells (green). The nuclear counter stain is DAPI (blue). Cells were fixed in paraformaldehyde, permeabilised with 0.25% Triton X100/PBS.



ICC staining SCAI in SH-SY-5Y cells (green). The nuclear counter stain is DAPI (blue). Cells were fixed in paraformaldehyde, permeabilised with 0.25% Triton X100/PBS.



ICC staining SCAI in PC-12 cells (green). The nuclear counter stain is DAPI (blue). Cells were fixed in paraformaldehyde, permeabilised with 0.25% Triton X100/PBS.

Background

Protein SCAI, also known as Suppressor of cancer cell invasion protein, and encoded by the gene name SCAI, is a tumor suppressor that suppresses MKL1-induced SRF transcriptional activity. It is a regulator of cell migration and appears to be involved in the RhoA (ras homolog gene family, member A)-Dia1 (diaphanous homolog 1) signal transduction pathway. SCAI localizes in the nucleus, where it binds and inhibits the myocardin-related transcription factor MAL by forming a ternary complex with serum response factor (SRF).

References

Note: This product is for in vitro research use only