

## Rock-2 Polyclonal Antibody

Catalog No: #41415

Package Size: #41415-1 50ul #41415-2 100ul

Orders: order@signalwayantibody.com

Support: tech@signalwayantibody.com

## Description

Product Name	Rock-2 Polyclonal Antibody
Host Species	Rabbit
Clonality	Polyclonal
Purification	The antibody was affinity-purified from rabbit antiserum by affinity-chromatography using epitope-specific immunogen.
Applications	WB ELISA
Species Reactivity	Hu Ms Rt Mk
Specificity	Rock-2 Polyclonal Antibody detects endogenous levels of Rock-2 protein.
Immunogen Type	peptide
Immunogen Description	Synthesized peptide derived from human Rock-2 around the non-phosphorylation site of Y722.
Target Name	Rock-2
Other Names	ROCK2; KIAA0619; Rho-associated protein kinase 2; Rho kinase 2; Rho-associated; coiled-coil-containing protein kinase 2; Rho-associated, coiled-coil-containing protein kinase II; ROCK-II; p164 ROCK-2
Accession No.	Swiss-Prot: O75116NCBI Gene ID: 9475
Uniprot	O75116
GeneID	9475;
SDS-PAGE MW	165kd
Concentration	1mg/ml
Formulation	Liquid in PBS containing 50% glycerol, 0.5% BSA and 0.02% sodium azide.
Storage	Store at -20°C/1 year

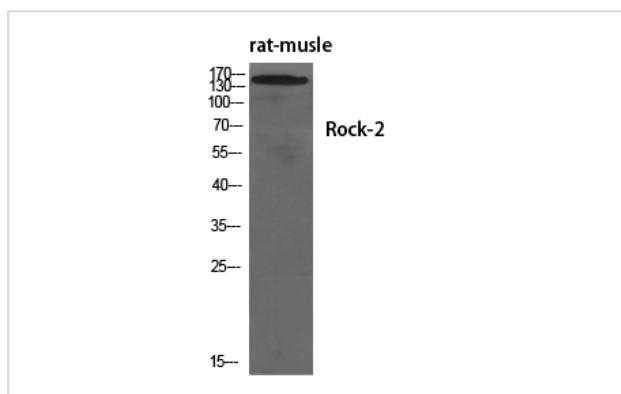
## Application Details

Western Blot: 1/500 - 1/2000.

ELISA: 1/40000.

Not yet tested in other applications.

## Images



Western Blot analysis of RAT-MUSCLE cells using Rock-2 Polyclonal Antibody

---

Note: This product is for in vitro research use only