

Mouse anti-Human IgG light chain(kappa chain)-HRP Antibody

Catalog No: #48076

Orders: order@signalwayantibody.com

Package Size: #48076-1 50ul #48076-2 100ul

Support: tech@signalwayantibody.com

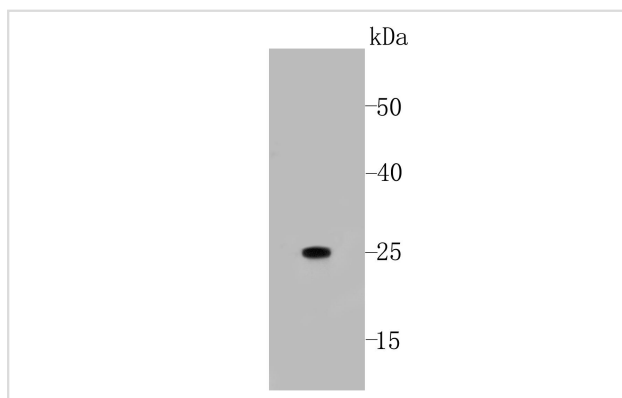
Description

Product Name	Mouse anti-Human IgG light chain(kappa chain)-HRP Antibody
Host Species	Mouse
Clonality	Monoclonal
Clone No.	A11-G11
Purification	Affinity purified
Applications	WB
Species Reactivity	Hu
Immunogen Description	Human IgG light chain
Conjugates	HRP-conjugated
Accession No.	Swiss-Prot#:
Calculated MW	25 kDa
Formulation	1*TBS (pH7.4), 0.5%BSA, 40%Glycerol. Preservative: 0.05% Sodium Azide.
Storage	Store at -20°C

Application Details

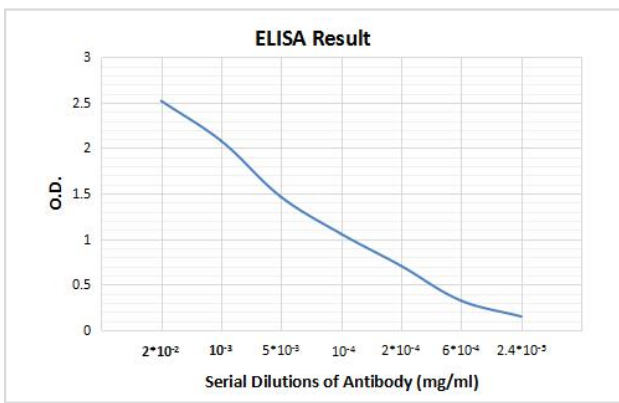
WB: 1:2,000-1:5,000

Images



Western blot analysis on human IgG kchain using anti-Human IgG light chain(kappa chain) conjugated HRP Mouse mAb

Representative standard curve using Mouse mAb



Background

IgG is the most abundant immunoglobulin and is approximately equally distributed in blood and in tissue liquids, constituting 75% of serum immunoglobulins in humans. There are 4 subclasses: IgG1 (66%), IgG2 (23%), IgG3 (7%) and IgG4 (4%). This is the only isotype that can pass through the human placenta, thereby providing protection to the fetus in its first weeks of life before its own immune system has developed. This antibody reacts with kappa-light-chain of human IgG.

References

Note: This product is for in vitro research use only