

## WSCD2 Antibody

Catalog No: #48084

Package Size: #48084-1 50ul #48084-2 100ul

Orders: [order@signalwayantibody.com](mailto:order@signalwayantibody.com)Support: [tech@signalwayantibody.com](mailto:tech@signalwayantibody.com)

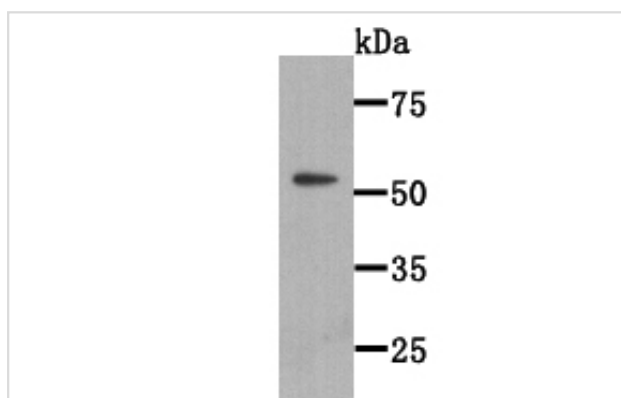
## Description

Product Name	WSCD2 Antibody
Host Species	Mouse
Clonality	Monoclonal
Clone No.	9-F3
Purification	ProA affinity purified
Applications	WB, ICC, IHC
Species Reactivity	Hu
Immunogen Description	Recombinant protein
Other Names	4933413A10Rik antibody C530024P05Rik antibody Gm450 antibody WSC domain containing 2 antibody WSC domain containing protein 2 antibody WSC domain-containing protein 2 antibody WSCD 2 antibody WSCD2 antibody WSCD2_HUMAN antibody
Accession No.	Swiss-Prot#:Q2TBF2
Uniprot	Q2TBF2
GeneID	9671;
Calculated MW	70 kDa
Formulation	1*TBS (pH7.4), 0.5%BSA, 50%Glycerol. Preservative: 0.05% Sodium Azide.
Storage	Store at -20°C

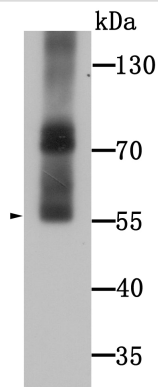
## Application Details

WB: 1:500-1:2,000 IHC: 1:100-1:500 ICC: 1:50-1:200

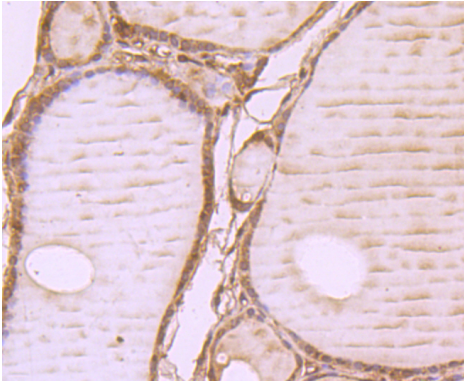
## Images



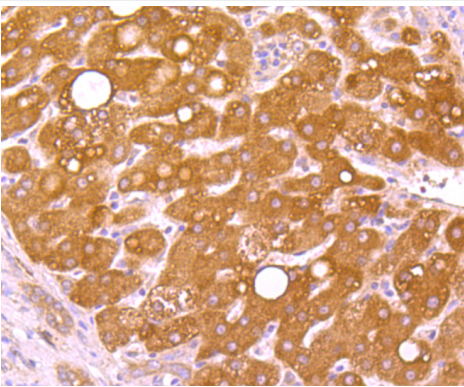
Western blot analysis of WSCD2 on WSCD2 recombinant protein lysate using anti-WSCD2 antibody at 1/2000 dilution.



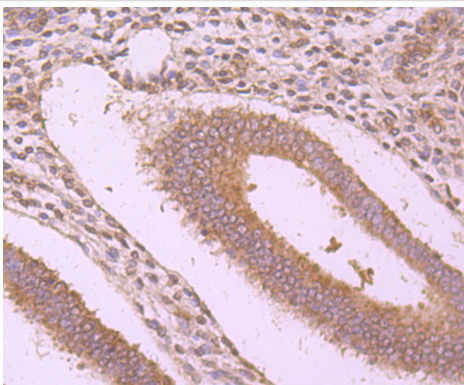
Western blot analysis of WSCD2 on human stomach tissue lysate using anti-WSCD2 antibody at 1/1000 dilution.



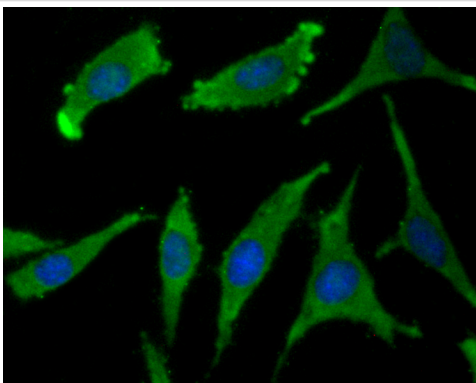
Immunohistochemical analysis of paraffin-embedded human thyroid tissue using anti-WSCD2 antibody. Counter stained with



Immunohistochemical analysis of paraffin-embedded human liver cancer tissue using anti-WSCD2 antibody. Counter stained with hematoxylin.



Immunohistochemical analysis of paraffin-embedded human uterus tissue using anti-WSCD2 antibody. Counter stained with hematoxylin.



ICC staining WSCD2 in SH-SY5Y cells (green). The nuclear counter stain is DAPI (blue). Cells were fixed in paraformaldehyde, permeabilised with 0.25% Triton X100/PBS.

## Background

---

WSC domain-containing protein 2 (WSCD2) is a 565 amino acid, single-pass membrane protein that contains two WSC domains. The WSC domain is named after the yeast WSC1-WSC4 (cell wall integrity and stress response components 1-4) proteins, which each contain a WSC domain, and is a putative carbohydrate binding domain that spans about 90 amino acids. Containing eight conserved cysteine residues, which are predicted to form disulfide bridges, WSC domains are often found with other domains, such as LDL-receptor class A, PKD and C-type lectin. Two isoforms of WSCD2 exist as a result of alternative splicing events.

## References

---

---

Note: This product is for in vitro research use only