

Alpha-cardiac actin Antibody

Catalog No: #48090

Package Size: #48090-1 50ul #48090-2 100ul

Orders: order@signalwayantibody.comSupport: tech@signalwayantibody.com

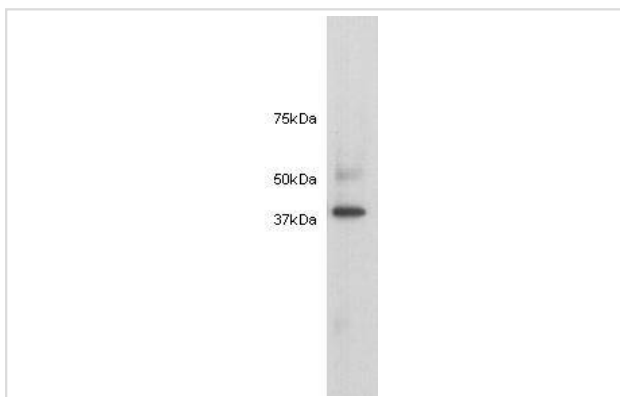
Description

Product Name	Alpha-cardiac actin Antibody
Host Species	Mouse
Clonality	Monoclonal
Clone No.	33-32
Purification	ProA affinity purified
Applications	WB, ICC, IHC
Species Reactivity	Hu,Ms,Rt, zebrafish
Immunogen Description	peptide
Other Names	ACTC antibody ACTC_HUMAN antibody ACTC1 antibody Actin alpha cardiac muscle 1 antibody Actin antibody alpha cardiac muscle 1 antibody Alpha-cardiac actin antibody ASD5 antibody CMD1R antibody CMH11 antibody LVNC4 antibody
Accession No.	Swiss-Prot#:P68032
Uniprot	P68032
GeneID	70;
Calculated MW	42 kDa
Formulation	1*TBS (pH7.4), 1%BSA, 40%Glycerol. Preservative: 0.05% Sodium Azide.
Storage	Store at -20°C

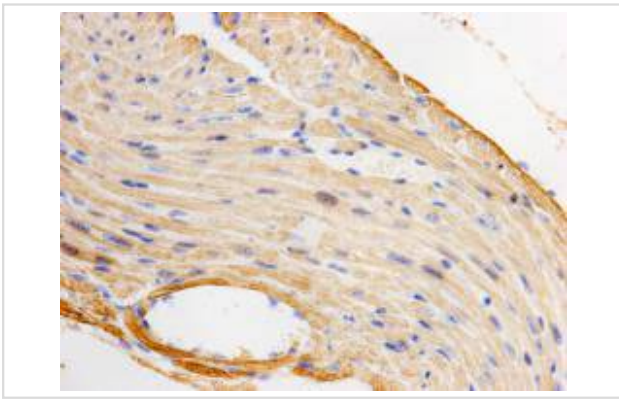
Application Details

WB: 1:5,000 IHC: 1:200 ICC: 1:100

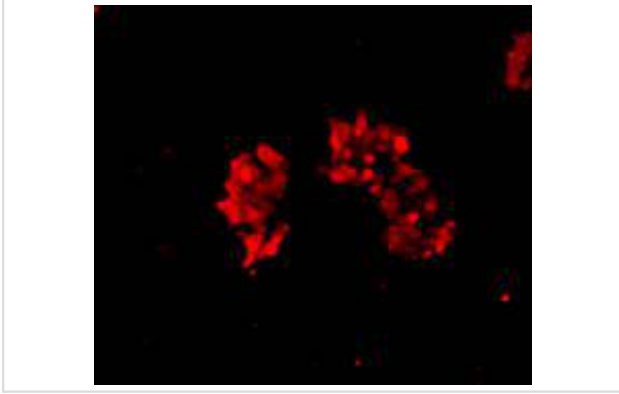
Images



Western blot analysis on mouse heart lysates using anti-Alpha-cardiac actin Mouse mAb



Immunohistochemical analysis of paraffin- embedded mouse heart tissue using anti-Alpha -cardiac actin Mouse mAb



Immunofluorescent staining of Hela cells using anti-Alpha-cardiac actin Mouse mAb

Background

Actins are highly conserved proteins expressed in all eucaryotic cells. Actin filaments form part of the cytoskeleton and play essential roles in regulating cell shape and movement. Six distinct actin isoforms have been identified in mammalian cells. Each is encoded by a separated gene and is expressed in a developmentally regulated and tissue-specific manner, alpha and beta cytoplasmic actins are expressed in a wide variety of cells; whereas, expression of alpha skeletal, alpha cardiac, alpha vascular, and gamma enteric actins are more restricted to specialized muscle cell type.

References

Note: This product is for in vitro research use only