

Rabbit IgG κ light chain-HRP Antibody

Catalog No: #48091

Package Size: #48091-1 50ul #48091-2 100ul

Orders: order@signalwayantibody.comSupport: tech@signalwayantibody.com

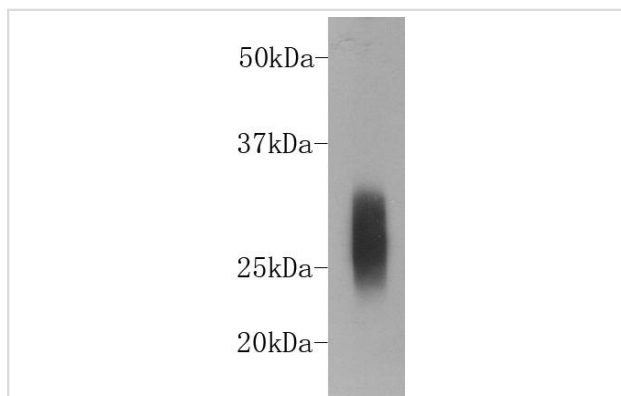
Description

Product Name	Rabbit IgG κ light chain-HRP Antibody
Host Species	Mouse
Clonality	Monoclonal
Clone No.	114
Purification	Affinity purified
Applications	WB
Species Reactivity	Rabbit
Immunogen Description	Rabbit IgG
Conjugates	HRP-conjugated
Accession No.	Swiss-Prot#:
Calculated MW	25 kDa
Formulation	1*TBS (pH7.4), 0.5%BSA, 40%Glycerol. Preservative: 0.05% Sodium Azide.
Storage	Store at -20°C

Application Details

WB: 1:5,000

Images



Western blot analysis on rabbit serum using mouse anti-rabbit IgG κ light chain Conjugated HRP antibody. Cat. # M1208-200.

Background

This monoclonal antibody can be used to detect the κ light chain of rabbit immunoglobulin directly.

References

Note: This product is for in vitro research use only