

## Breast cancer-overexpressed gene 1 protein Antibody

Catalog No: #48092

Package Size: #48092-1 50ul #48092-2 100ul

Orders: [order@signalwayantibody.com](mailto:order@signalwayantibody.com)Support: [tech@signalwayantibody.com](mailto:tech@signalwayantibody.com)

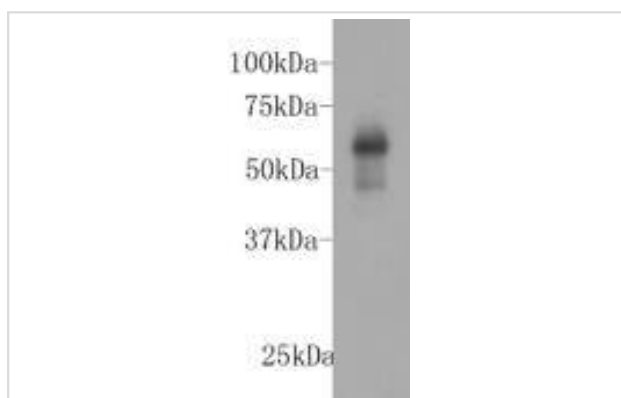
## Description

Product Name	Breast cancer-overexpressed gene 1 protein Antibody
Host Species	Mouse
Clonality	Monoclonal
Clone No.	A0-F3
Purification	ProA affinity purified
Applications	WB, ICC, IHC
Species Reactivity	Hu
Immunogen Description	Recombinant protein within human KIAA0100 1900-2250 aa.
Other Names	Antigen MLAA-22 antibody BCOX antibody BCOX1 antibody Breast cancer-overexpressed gene 1 protein antibody CT101 antibody DKFZp686M0843 antibody K0100_HUMAN antibody KIAA0100 antibody MGC111488 antibody MGC134981 antibody UPF0378 protein KIAA0100 antibody
Accession No.	Swiss-Prot#:Q14667
Uniprot	Q14667
GeneID	9703;
Calculated MW	254kDa
Formulation	1*TBS (pH7.4), 1%BSA, 40%Glycerol. Preservative: 0.05% Sodium Azide.
Storage	Store at -20°C

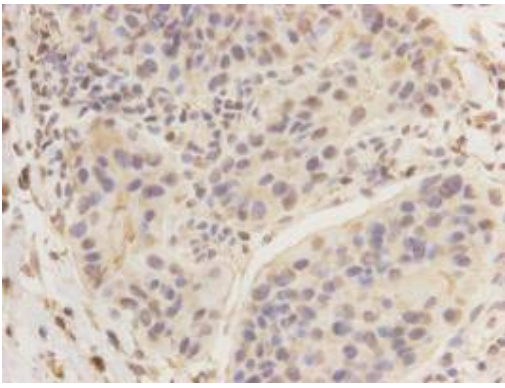
## Application Details

WB: 1:1,000-1:10,000 IHC: 1:200 ICC: 1:100-1:500

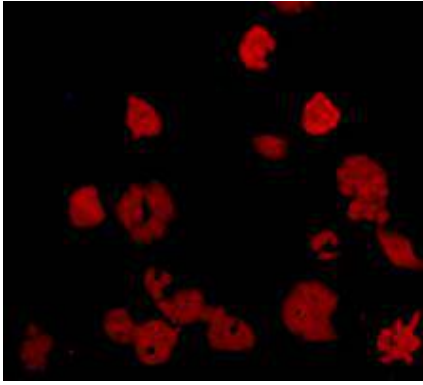
## Images



Western blot analysis on recombinant protein using anti-KIAA0100 Mouse mAb (Cat. # M1210-6).



Immunohistochemical analysis of paraffin- embedded human breast carcinoma tissue using anti-KIAA0100 Mouse mAb (Cat. # M1210-6).



Immunofluorescent staining of Hela cells using anti-KIAA0100 Mouse mAb (Cat. # M1210-6).

## Background

Breast cancer-overexpressed gene 1 protein KIAA0100 is a glucoprotein composed of 2235 amino acids. KIAA0100 has four isoforms (254kDa, 250kDa, 45kDa, 25kDa). KIAA0100 is expressed in pancreas, placenta and up-regulated in breast carcinoma epithelial cells.

## References

Note: This product is for in vitro research use only