

## KLHDC3 Antibody

Catalog No: #48101

Package Size: #48101-1 50ul #48101-2 100ul

Orders: [order@signalwayantibody.com](mailto:order@signalwayantibody.com)Support: [tech@signalwayantibody.com](mailto:tech@signalwayantibody.com)

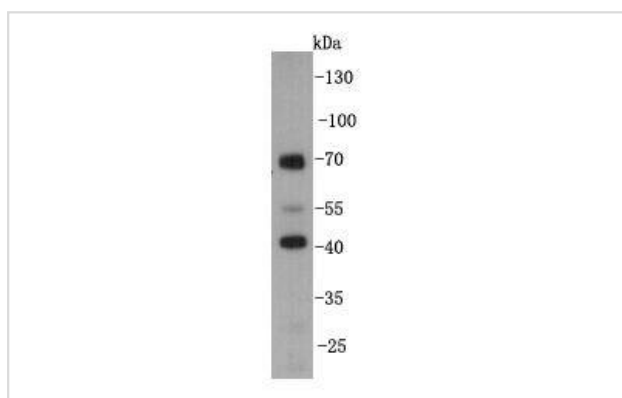
## Description

|                       |  |
|-----------------------|--|
| Product Name          | KLHDC3 Antibody  |
| Host Species          | Mouse  |
| Clonality             | Monoclonal   |
| Clone No.             | A8-E8  |
| Purification          | ProA affinity purified   |
| Applications          | WB, IHC  |
| Species Reactivity    | Ms   |
| Immunogen Description | recombinant protein  |
| Other Names           | dJ20C7.3 antibody hPEAS antibody kelch domain containing 3 antibody Kelch domain-containing protein 3 antibody KLDC3_HUMAN antibody KLHDC3 antibody PEAS antibody Protein Peas antibody RP1-20C7.3 antibody Testis intracellular mediator protein antibody |
| Accession No.         | Swiss-Prot#:Q9BQ90   |
| Uniprot               | Q9BQ90   |
| GeneID                | 116138;  |
| Calculated MW         | 43 kDa   |
| Formulation           | 1*TBS (pH7.4),0.5%BSA, 40%Glycerol. Preservative: 0.05% Sodium Azide.  |
| Storage               | Store at -20°C   |

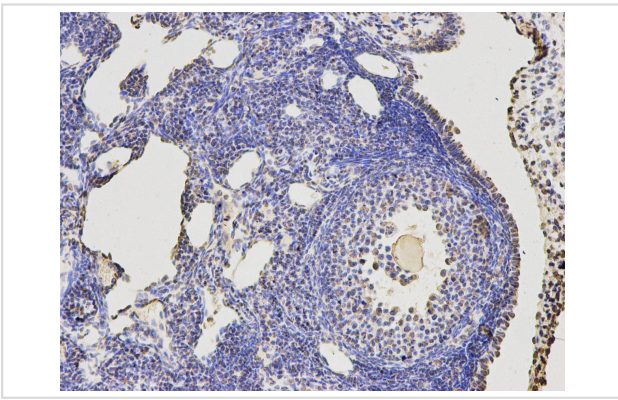
## Application Details

WB: 1:2,000-1:5,000IHC: 1:200-1:500

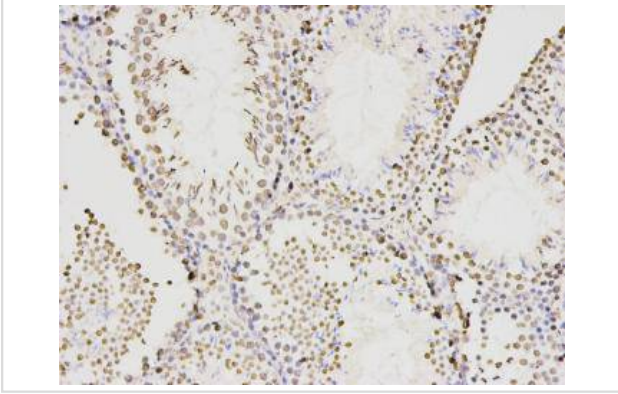
## Images



Western blot analysis on mouse testis tissue lysates using anti-KLHDC3 mouse mAb.



Immunohistochemical analysis of paraffin-embedded mouse ovary tissue using anti- KLHDC3 mouse mAb.



Immunohistochemical analysis of paraffin-embedded mouse testis tissue using anti- KLHDC3 mouse mAb.

## Background

Peas is specifically expressed in testis, localized in pachytene spermatocyte cytoplasm and chromatin, and homologous to RAG2 raise a possibility that Peas might be involved in the meiotic recombination in testis.

## References

Note: This product is for in vitro research use only