

## Alpha smooth muscle Actin Antibody

Catalog No: #48104

Package Size: #48104-1 50ul #48104-2 100ul

Orders: [order@signalwayantibody.com](mailto:order@signalwayantibody.com)Support: [tech@signalwayantibody.com](mailto:tech@signalwayantibody.com)

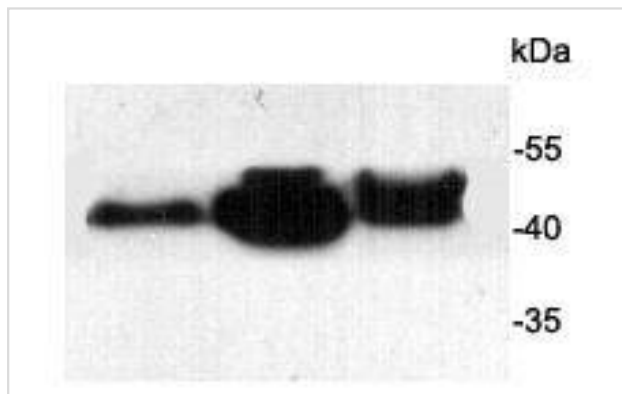
## Description

Product Name	Alpha smooth muscle Actin Antibody
Host Species	Mouse
Clonality	Monoclonal
Clone No.	A5-E6
Purification	ProG affinity purified
Applications	WB, ICC, IHC, FC
Species Reactivity	Hu,Ms
Immunogen Description	This antibody is produced by immunizing mice with a synthetic peptide (KLH-coupled) corresponding to a region of alpha smooth muscle Actin.
Other Names	a actin antibody AAT6 antibody ACTA_HUMAN antibody ACTA2 antibody Actin alpha 2 smooth muscle aorta antibody Actin aortic smooth muscle antibody Actin, aortic smooth muscle antibody ACTSA antibody ACTVS antibody Alpha 2 actin antibody Alpha actin 2 antibody Alpha cardiac actin antibody Alpha-actin-2 antibody Cell growth inhibiting gene 46 protein antibody Cell growth-inhibiting gene 46 protein antibody GIG46 antibody Growth inhibiting gene 46 antibody MYMY5 antibody
Accession No.	Swiss-Prot#:P62736
Uniprot	P62736
GeneID	59;
Calculated MW	42 kDa
Formulation	1*TBS (pH7.4), 1%BSA, 40%Glycerol. Preservative: 0.05% Sodium Azide.
Storage	Store at -20°C

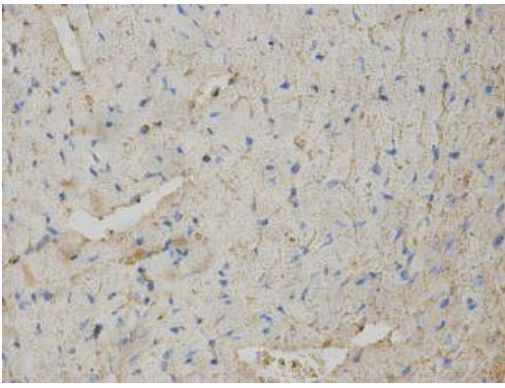
## Application Details

WB: 1:1,000 IHC: 1:200 ICC: 1:200

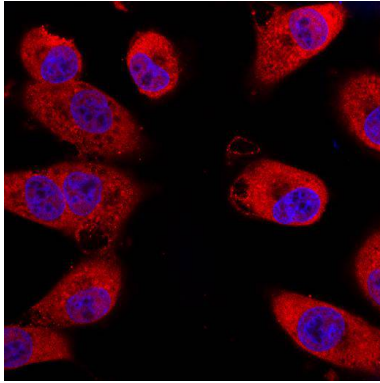
## Images



Western blot analysis of alpha smooth muscle Actin on NIH-3T3 (1), human heart (2) and mouse heart (3) using anti-alpha smooth muscle Actin antibody at 1/1,000 dilution.



Immunohistochemical analysis of paraffin-embedded mouse heart tissue using anti-alpha smooth muscle Actin antibody. Counter stained with hematoxylin.



ICC staining alpha smooth muscle Actin (red) in A549 cells. The nuclear counter stain is DAPI (blue). Cells were fixed in paraformaldehyde, permeabilised with 0.25% Triton X100/PBS.

## Background

Actins are highly conserved proteins involved in cell motility, structure and integrity. Actin has been found to be expressed in at least six isomeric forms. It is expressed in heart and skeletal striated muscle tissue, and in certain smooth muscle tissues, regulating contractile potentials for these cells. It is also expressed in the cytoplasm of non-muscle cells, functioning to control cell structure and motility. Smooth muscle alpha actin is of further interest because it is one of a few genes whose expression is relatively restricted to vascular smooth muscle cells. Expression of smooth muscle alpha actin is regulated by hormones, cell proliferation, and altered by pathological conditions including oncogenic transformation and atherosclerosis.

## References

Note: This product is for in vitro research use only