

## Alpha-tubulin Antibody

Catalog No: #48111

Package Size: #48111-1 50ul #48111-2 100ul

Orders: [order@signalwayantibody.com](mailto:order@signalwayantibody.com)Support: [tech@signalwayantibody.com](mailto:tech@signalwayantibody.com)

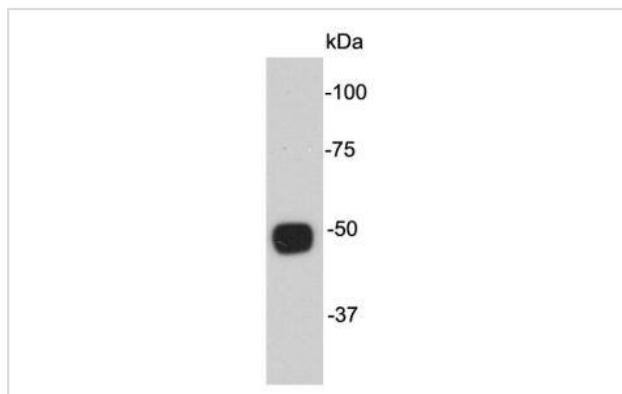
## Description

Product Name	Alpha-tubulin Antibody
Host Species	Mouse
Clonality	Monoclonal
Clone No.	A8-6
Purification	ProA affinity purified
Applications	WB, ICC, IHC, FC
Species Reactivity	Hu,Ms,Rt, zebrafish
Immunogen Description	peptide
Other Names	TUBA1 antibody TUBA1A antibody TUBA2 antibody TUBA3 antibody TUBA3C antibody TUBA4A antibody Tubulin, alpha 1a antibody Tubulin, alpha 3c antibody Tubulin, alpha 4a antibody
Accession No.	Swiss-Prot#:P68366
Uniprot	P68366
GeneID	7277;
Calculated MW	50 kDa
Formulation	1*TBS (pH7.4), 1%BSA, 40%Glycerol. Preservative: 0.05% Sodium Azide.
Storage	Store at -20°C

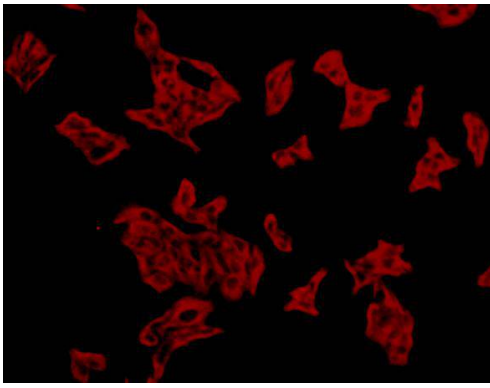
## Application Details

WB: 1:5,000 ICC: 1:500

## Images



Western blot analysis on PC12 cell lysates using anti- $\alpha$ -tubulin mouse mAb.



ICC staining  $\alpha$ -tubulin in HeLa cells (red). Cells were fixed in paraformaldehyde, permeabilised with 0.25% Triton X100/PBS.

## Background

The cytoskeleton consists of three types of cytosolic fibers: microtubules, microfilaments (actin filaments), and intermediate filaments. Globular tubulin subunits comprise the microtubule building block, with  $\alpha/\beta$ -tubulin heterodimers forming the tubulin subunit common to all eukaryotic cells. Acetylation of alpha chains at Lys-40 stabilizes microtubules and affects affinity and processivity of microtubule motors. This modification has a role in multiple cellular functions, ranging from cell motility, cell cycle progression or cell differentiation to intracellular trafficking and signaling.

## References

Note: This product is for in vitro research use only