

RUNX2 Polyclonal Antibody

Catalog No: #41419

Package Size: #41419-1 50ul #41419-2 100ul

Orders: order@signalwayantibody.comSupport: tech@signalwayantibody.com

Description

Product Name	RUNX2 Polyclonal Antibody
Host Species	Rabbit
Clonality	Polyclonal
Purification	The antibody was affinity-purified from rabbit antiserum by affinity-chromatography using epitope-specific immunogen.
Applications	WB IHC ELISA
Species Reactivity	Hu Ms
Specificity	RUNX2 Polyclonal Antibody detects endogenous levels of RUNX2 protein.
Immunogen Type	peptide
Immunogen Description	Synthesized peptide derived from the Internal region of human RUNX2.
Target Name	RUNX2
Other Names	RUNX2; AML3; CBFA1; OSF2; PEBP2A; Runt-related transcription factor 2; Acute myeloid leukemia 3 protein; Core-binding factor subunit alpha-1; CBF-alpha-1; Oncogene AML-3; Osteoblast-specific transcription factor 2; OSF-2; Polyomavirus enhan
Accession No.	Swiss-Prot: Q13950NCBI Gene ID: 860
Uniprot	Q13950
GeneID	860;
SDS-PAGE MW	57kd
Concentration	1mg/ml
Formulation	Liquid in PBS containing 50% glycerol, 0.5% BSA and 0.02% sodium azide.
Storage	Store at -20°C/1 year

Application Details

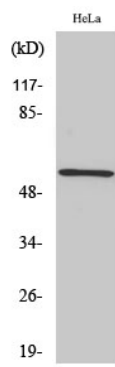
Western Blot: 1/500 - 1/2000.

Immunohistochemistry: 1/100 - 1/300.

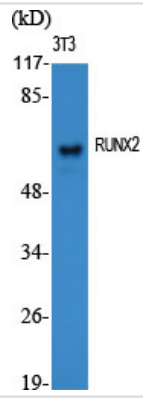
ELISA: 1/10000.

Not yet tested in other applications.

Images



Western Blot analysis of HeLa cells using RUNX2 Polyclonal Antibody



Western Blot analysis of NIH-3T3 cells using RUNX2 Polyclonal Antibody

Note: This product is for in vitro research use only