

Cathepsin B Antibody

Catalog No: #48118

Package Size: #48118-1 50ul #48118-2 100ul

Orders: order@signalwayantibody.com

Support: tech@signalwayantibody.com

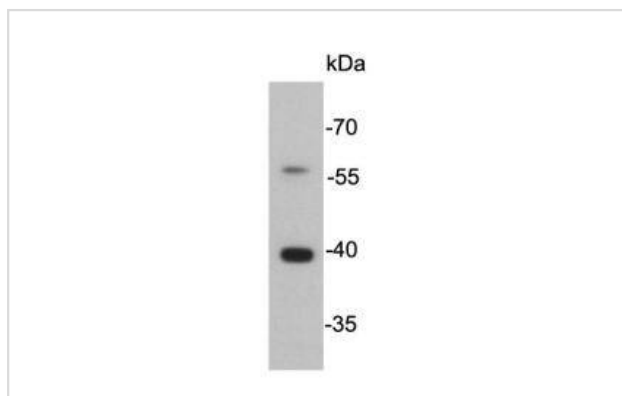
Description

Product Name	Cathepsin B Antibody
Host Species	Mouse
Clonality	Monoclonal
Clone No.	J11-A11
Purification	ProA affinity purified
Applications	WB, ICC, IHC
Species Reactivity	Hu, zebrafish
Immunogen Description	recombinant protein
Other Names	Amyloid precursor protein secretase antibody APP secretase antibody APPS antibody CATB_HUMAN antibody Cathepsin B heavy chain antibody Cathepsin B1 antibody CathepsinB antibody CPSB antibody CTSB antibody cysteine protease antibody OTTHUMP00000116009 antibody OTTHUMP00000229510 antibody OTTHUMP00000229511 antibody OTTHUMP00000229512 antibody OTTHUMP00000229514 antibody OTTHUMP00000229515 antibody OTTHUMP00000229516 antibody Preprocathepsin B antibody
Accession No.	Swiss-Prot#:P07858
Uniprot	P07858
GeneID	1508;
Calculated MW	38kDa
Formulation	1*TBS (pH7.4), 1%BSA, 40%Glycerol. Preservative: 0.05% Sodium Azide.
Storage	Store at -20°C

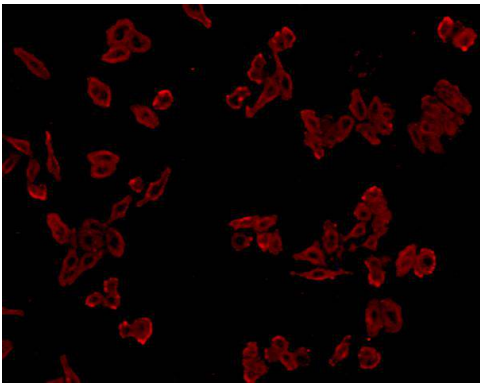
Application Details

WB: 1:5,000-1:10,000 ICC: 1:200-1:500

Images



Western blot analysis of Cathepsin B on SW480 cell lysate using anti-Cathepsin B antibody at 1/5,000 dilution.



ICC staining Cathepsin B in HepG2 cells (red). Cells were fixed in paraformaldehyde, permeabilised with 0.25% Triton X100/PBS.

Background

Cathepsin B is an enzymatic protein belonging to the peptidase (or protease) families. In humans, it is coded by the CTSB gene. A wide array of diseases results in elevated levels of cathepsin B, which causes numerous pathological processes including cell death, inflammation, and production of toxic peptides. Focusing on neurological diseases, cathepsin B gene knockout studies in an epileptic rodent model have shown cathepsin B causes a significant amount of the apoptotic cell death that occurs as a result of inducing epilepsy. Mutations in the CTSB gene have been linked to tropical pancreatitis, a form of chronic pancreatitis.

References

Note: This product is for in vitro research use only