

SCAF1 Polyclonal Antibody

Catalog No: #41421

Package Size: #41421-1 50ul #41421-2 100ul

Orders: order@signalwayantibody.com

Support: tech@signalwayantibody.com

Description

Product Name	SCAF1 Polyclonal Antibody
Host Species	Rabbit
Clonality	Polyclonal
Purification	The antibody was affinity-purified from rabbit antiserum by affinity-chromatography using epitope-specific immunogen.
Applications	WB ELISA
Species Reactivity	Hu Ms
Specificity	SCAF1 Polyclonal Antibody detects endogenous levels of SCAF1 protein.
Immunogen Type	peptide
Immunogen Description	Synthesized peptide derived from the N-terminal region of human SCAF1.
Target Name	SCAF1
Other Names	SCAF1; SFRS19; SRA1; Splicing factor; arginine/serine-rich 19; SR-related and CTD-associated factor 1; SR-related-CTD-associated factor; SCAF; Serine arginine-rich pre-mRNA splicing factor SR-A1; SR-A1
Accession No.	Swiss-Prot: Q9H7N4NCBI Gene ID: 58506
Uniprot	Q9H7N4
GeneID	58506;
SDS-PAGE MW	140kd
Concentration	1mg/ml
Formulation	Liquid in PBS containing 50% glycerol, 0.5% BSA and 0.02% sodium azide.
Storage	Store at -20°C/1 year

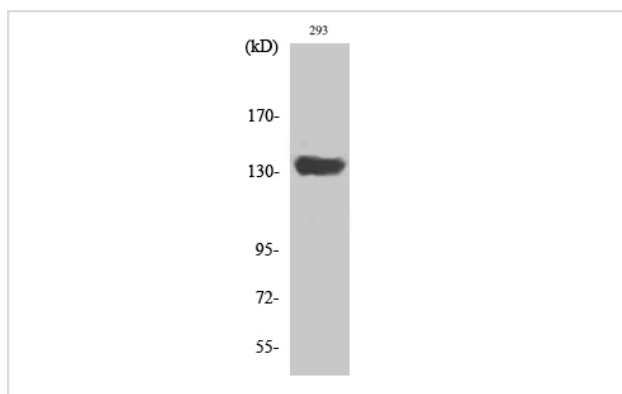
Application Details

Western Blot: 1/500 - 1/2000.

ELISA: 1/40000.

Not yet tested in other applications.

Images



Western Blot analysis of Jurkat cells using SCAF1 Polyclonal Antibody

Note: This product is for in vitro research use only