

ZFX Antibody

Catalog No: #48151

Package Size: #48151-1 50ul #48151-2 100ul

Orders: order@signalwayantibody.comSupport: tech@signalwayantibody.com

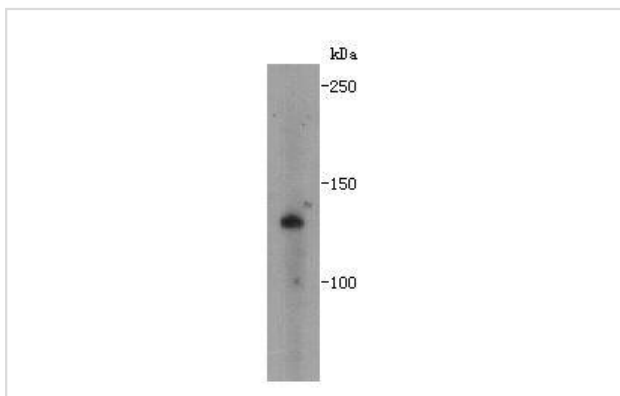
Description

Product Name	ZFX Antibody
Host Species	Rabbit
Clonality	Polyclonal
Purification	Peptide affinity purified
Applications	WB
Species Reactivity	Hu,Ms
Immunogen Description	Synthetic peptide (KLH-coupled) within human ZFX 360-420 aa.
Other Names	X-linked zinc finger protein antibody zfx antibody ZFX_HUMAN antibody Zinc finger protein, X-linked antibody Zinc Finger X Chromosomal Protein antibody Zinc finger X-chromosomal protein antibody ZNF926 antibody
Accession No.	Swiss-Prot#:P17010
Uniprot	P17010
GeneID	7543;
Calculated MW	130kDa
Formulation	1*TBS (pH7.4), 1%BSA, 40%Glycerol. Preservative: 0.05% Sodium Azide.
Storage	Store at -20°C

Application Details

WB: 1:2,000

Images



Western blot analysis on NCCIT cell lysates using anti-ZFX rabbit polyclonal antibodies.

Background

The ZFX (X-linked zinc finger protein) gene is expressed from the inactive X chromosome and is structurally similar to its homologue on the Y chromosome, ZFY. Transcripts of ZFX and ZFY encode proteins composed of a highly acidic amino-terminal domain and a carboxy-terminal zinc-finger motif that is commonly associated with nucleic acid-binding proteins. Conditional gene targeting studies in mouse have suggested ZFX is

also required for self-renewal of embryonic and hematopoietic stem cells. ZFX has also been suggested to play a role in proliferation and expansion of B cells, and could contribute to lymphocyte homeostasis.

References

Note: This product is for in vitro research use only