

## SDHA Polyclonal Antibody

Catalog No: #41423

Package Size: #41423-1 50ul #41423-2 100ul

Orders: order@signalwayantibody.com

Support: tech@signalwayantibody.com

## Description

Product Name	SDHA Polyclonal Antibody
Host Species	Rabbit
Clonality	Polyclonal
Purification	The antibody was affinity-purified from rabbit antiserum by affinity-chromatography using epitope-specific immunogen.
Applications	WB ELISA
Species Reactivity	Hu Ms Rt
Specificity	SDHA Polyclonal Antibody detects endogenous levels of SDHA protein.
Immunogen Type	peptide
Immunogen Description	Synthesized peptide derived from the C-terminal region of human SDHA.
Target Name	SDHA
Other Names	SDHA; SDH2; SDHF; Succinate dehydrogenase [ubiquinone] flavoprotein subunit; mitochondrial; Flavoprotein subunit of complex II; Fp
Accession No.	Swiss-Prot: P31040NCBI Gene ID: 6389
Uniprot	P31040
GeneID	6389;
SDS-PAGE MW	70kd
Concentration	1mg/ml
Formulation	Liquid in PBS containing 50% glycerol, 0.5% BSA and 0.02% sodium azide.
Storage	Store at -20°C/1 year

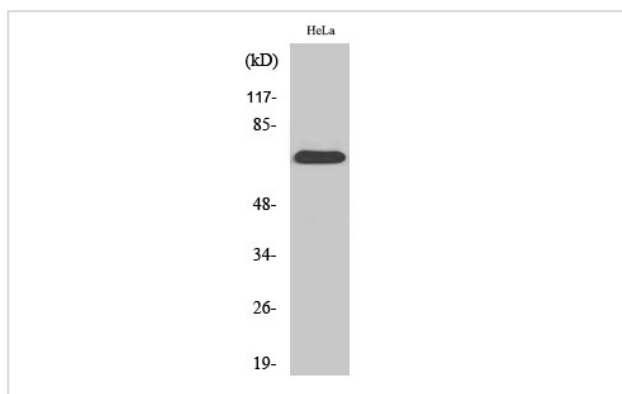
## Application Details

Western Blot: 1/500 - 1/2000.

ELISA: 1/10000.

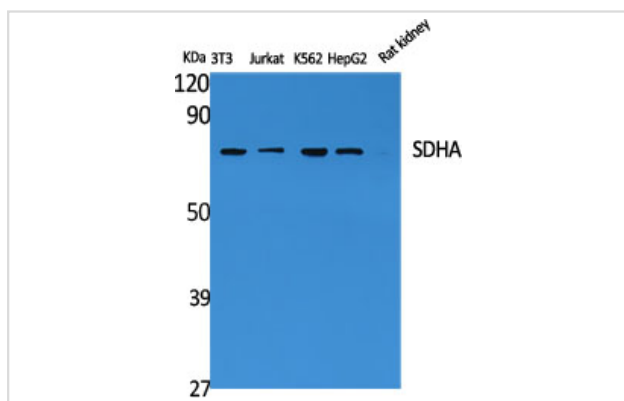
Not yet tested in other applications.

## Images



Western Blot analysis of HepG2 cells using SDHA Polyclonal Antibody

Western Blot analysis of NIH-3T3 Jurkat K562 HepG2  
RAT-KIDNEY cells using SDHA Polyclonal Antibody



Note: This product is for in vitro research use only