

Nucleolin Antibody

Catalog No: #48154

Package Size: #48154-1 50ul #48154-2 100ul

Orders: order@signalwayantibody.comSupport: tech@signalwayantibody.com

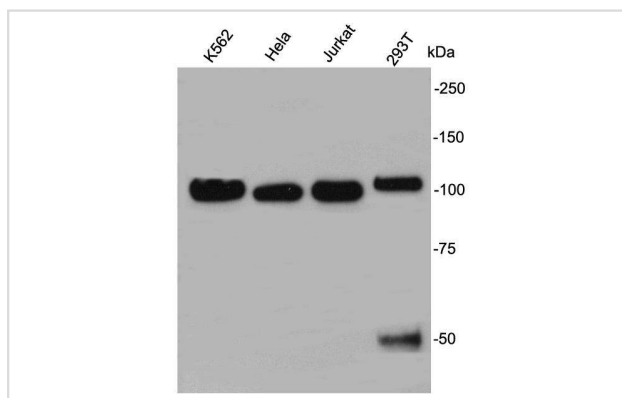
Description

Product Name	Nucleolin Antibody
Host Species	Rabbit
Clonality	Polyclonal
Purification	Immunogen affinity purified
Applications	WB, ICC
Species Reactivity	Hu,Ms
Immunogen Description	peptide
Other Names	C23 antibody FLJ45706 antibody MS1116 antibody NCL antibody Nucl antibody NUCL_HUMAN antibody Nucleolin antibody Protein C23 antibody
Accession No.	Swiss-Prot#:P19338
Uniprot	P19338
GeneID	4691;
Calculated MW	~100kDa
Formulation	1*TBS (pH7.4), 1%BSA, 40%Glycerol. Preservative: 0.05% Sodium Azide.
Storage	Store at -20°C

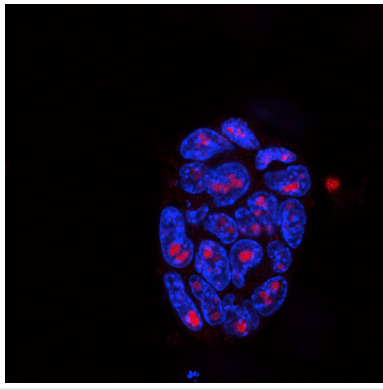
Application Details

WB: 1:1,000 ICC: 1:100-1:200

Images



Western blot analysis on different cell lysates using anti-nucleolin rabbit polyclonal antibodies.



ICC staining nucleolin in mouse embryonic stem cells (red). Cells were fixed in paraformaldehyde, permeabilised with 0.25% Triton X100/PBS and counterstained with DAPI in order to highlight the nucleus (blue).

Background

Nucleolin is a multi-functional protein that is one of the major components of the nucleoli. It plays an essential role in various steps of ribosome biogenesis including rRNA synthesis, processing of pre-rRNA, pre-ribosomal RNA assembly, and transport of ribosomal proteins out of the nucleus. While the main function of nucleolin is ribosome biogenesis, it plays an important role in various other nuclear activities. Down regulation of nucleolin leads to increased expression of p53, defects in genome duplication, and a delay at prometaphase during mitosis leading to cell cycle arrest.

References

Note: This product is for in vitro research use only