

Nucleolin Antibody

Catalog No: #48155

Package Size: #48155-1 50ul #48155-2 100ul

Orders: order@signalwayantibody.com

Support: tech@signalwayantibody.com

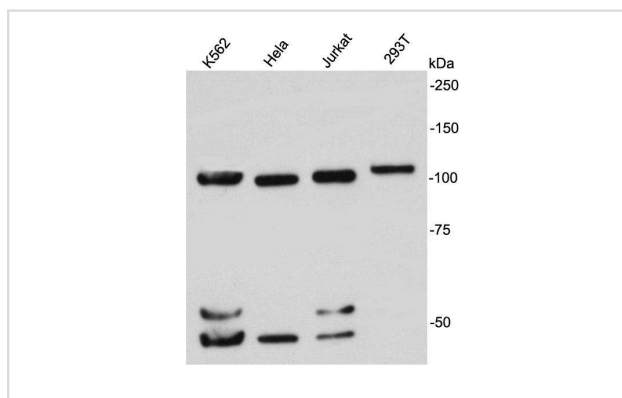
Description

| | |
|-----------------------|------------------------------------------------------------------------------------------------------------------------------------------|
| Product Name | Nucleolin Antibody |
| Host Species | Rabbit |
| Clonality | Polyclonal |
| Purification | Immunogen affinity purified |
| Applications | WB, ICC, IHC |
| Species Reactivity | Hu |
| Immunogen Description | peptide |
| Other Names | C23 antibody FLJ45706 antibody MS1116 antibody NCL antibody Nucl antibody NUCL_HUMAN antibody Nucleolin antibody Protein C24 antibody |
| Accession No. | Swiss-Prot#:P19338 |
| Uniprot | P19338 |
| GeneID | 4691; |
| Calculated MW | ~100kDa |
| Formulation | 1*TBS (pH7.4), 1%BSA, 40%Glycerol. Preservative: 0.05% Sodium Azide. |
| Storage | Store at -20°C |

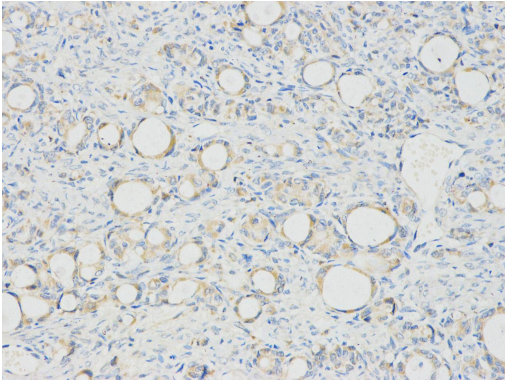
Application Details

WB: 1:1,000 IHC: 1:200 ICC: 1:50-1:100

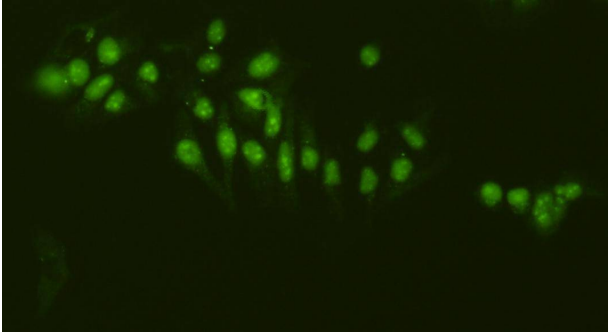
Images



Western blot analysis on different cell lysates using anti-nucleolin rabbit polyclonal antibodies.



Immunohistochemical analysis of paraffin-embedded human ovary tissue using anti-nucleolin rabbit polyclonal antibody.



Immunofluorescent staining of HeLa cells using anti-nucleolin rabbit polyclonal antibody.

Background

Nucleolin is a multi-functional protein that is one of the major components of the nucleoli. It plays an essential role in various steps of ribosome biogenesis including rRNA synthesis, processing of pre-rRNA, pre-ribosomal RNA assembly, and transport of ribosomal proteins out of the nucleus. While the main function of nucleolin is ribosome biogenesis, it plays an important role in various other nuclear activities. Down regulation of nucleolin leads to increased expression of p53, defects in genome duplication, and a delay at prometaphase during mitosis leading to cell cycle arrest.

References

Note: This product is for in vitro research use only