

## Secretin Receptor Polyclonal Antibody

Catalog No: #41424

Package Size: #41424-1 50ul #41424-2 100ul

Orders: [order@signalwayantibody.com](mailto:order@signalwayantibody.com)Support: [tech@signalwayantibody.com](mailto:tech@signalwayantibody.com)

## Description

Product Name	Secretin Receptor Polyclonal Antibody
Host Species	Rabbit
Clonality	Polyclonal
Purification	The antibody was affinity-purified from rabbit antiserum by affinity-chromatography using epitope-specific immunogen.
Applications	WB IHC IF
Species Reactivity	Hu
Specificity	Secretin Receptor Polyclonal Antibody detects endogenous levels of Secretin Receptor protein.
Immunogen Type	peptide
Immunogen Description	Synthesized peptide derived from the Internal region of human Secretin Receptor.
Target Name	Secretin Receptor
Other Names	SCTR; Secretin receptor; SCT-R
Accession No.	Swiss-Prot: P47872NCBI Gene ID: 6344
Uniprot	P47872
GeneID	6344;
SDS-PAGE MW	48kd
Concentration	1mg/ml
Formulation	Liquid in PBS containing 50% glycerol, 0.5% BSA and 0.02% sodium azide.
Storage	Store at -20°C/1 year

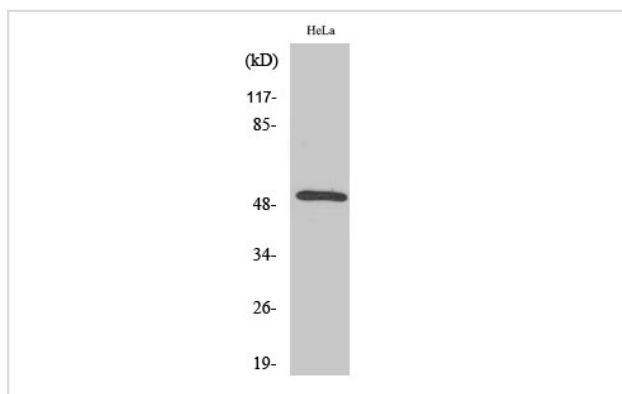
## Application Details

Western Blot: 1/500 - 1/2000.

Immunohistochemistry: 1/100 - 1/300.

Immunofluorescence: 1/200 - 1/1000.

## Images



Western Blot analysis of HuvEc cells using Secretin Receptor Polyclonal Antibody

---

Note: This product is for in vitro research use only