

## Septin 3 Polyclonal Antibody

Catalog No: #41426

Package Size: #41426-1 50ul #41426-2 100ul

Orders: order@signalwayantibody.com

Support: tech@signalwayantibody.com

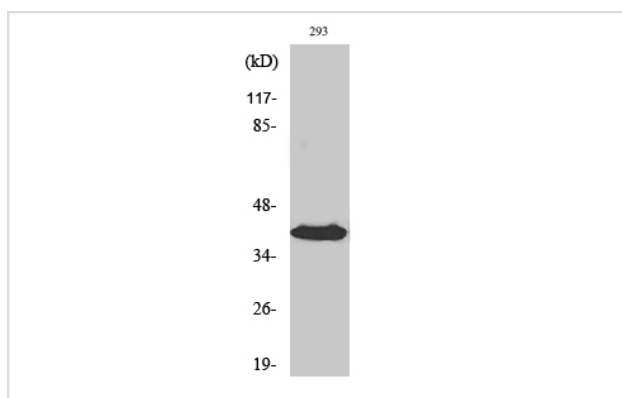
## Description

|                       |   |
|-----------------------|---|
| Product Name          | Septin 3 Polyclonal Antibody  |
| Host Species          | Rabbit  |
| Clonality             | Polyclonal  |
| Purification          | The antibody was affinity-purified from rabbit antiserum by affinity-chromatography using epitope-specific immunogen. |
| Applications          | WB  |
| Species Reactivity    | Hu Ms Rt  |
| Specificity           | Septin 3 Polyclonal Antibody detects endogenous levels of Septin 3 protein.   |
| Immunogen Type        | peptide   |
| Immunogen Description | Synthesized peptide derived from the Internal region of human Septin 3.   |
| Target Name           | Septin 3  |
| Other Names           | SEPT3; SEP3; Neuronal-specific septin-3   |
| Accession No.         | Swiss-Prot: Q9UH03NCBI Gene ID: 55964   |
| Uniprot               | Q9UH03  |
| GeneID                | 55964;  |
| SDS-PAGE MW           | 41kd  |
| Concentration         | 1mg/ml  |
| Formulation           | Liquid in PBS containing 50% glycerol, 0.5% BSA and 0.02% sodium azide.   |
| Storage               | Store at -20°C/1 year   |

## Application Details

Western Blot: 1/500 - 1/2000.

## Images



Western Blot analysis of 293 cells using Septin 3 Polyclonal Antibody

---

Note: This product is for in vitro research use only